

AVTECH CMS LITE Quick Guide

CMS Manual v 1.0.0

Updated November, 2021

1. Minimum System Requirements	P.3
2. Prerequisite PC Setting	P.4
3. Installation	P.8
4. Quick Start	P.12
5. Control Panel Overview	P.14
6. Device Area	P.18
6.1. Add Device	
6.2. Delete Device	
7. Display Layouts	P.20
8. PTZ Control Panel	P.22
9. Record	P.23
9.1. Record Setting	
9.2. Start/Stop Record	
10. Playback	P.27
10.1. Local Playback	
10.2. Multiple Local Playback	
11. Record Backup	P.30
12. System Configuration	P.31

Minimum System Requirements

Before installing AVTECH CMS Lite, make sure your system specification meets the least requirements:

CPU	Pentium core G4500 or above
Memory	4GB or above
Graphics Card	Intel HD4000 or above
Hard Dive Type	At least 500GB
Operation system	Micorsoft Windows 7 / 8 / 10 64 bit

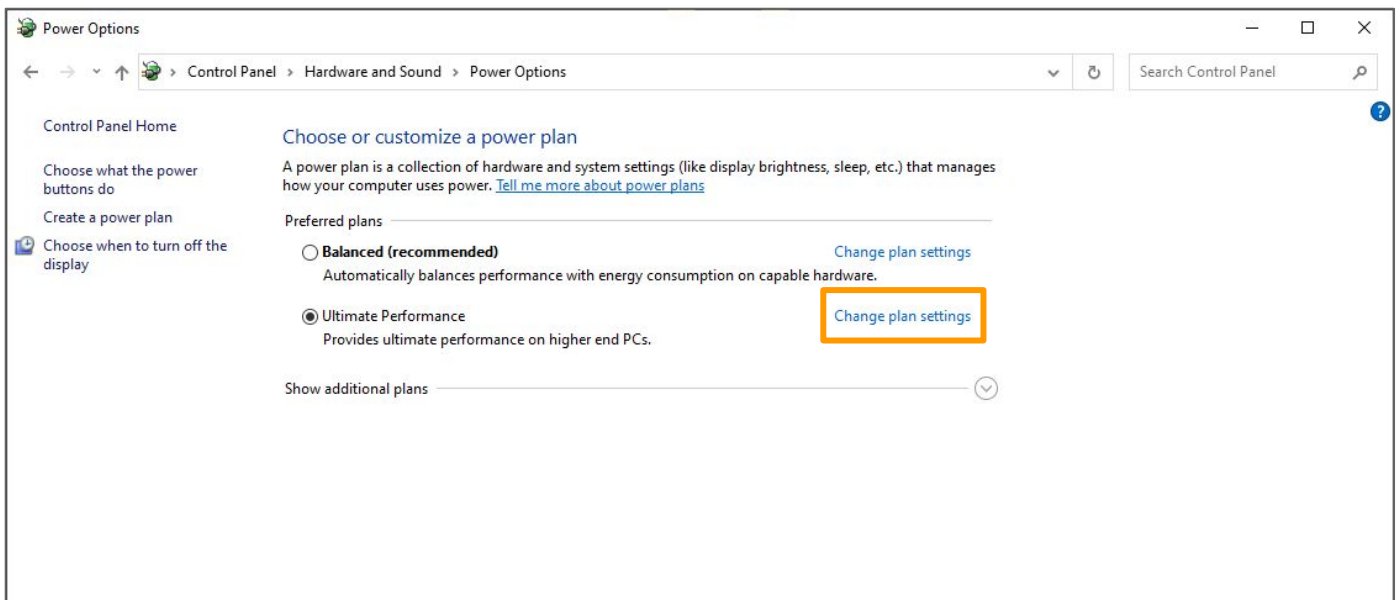
Notes:

1. Please be sure to check all your system are up-to-date.
2. Multi-live display will occupy the memory and reduce the CPU performance. If the live view performance is not satisfied you, please decrease the channel number you view in the meantime.
3. For multiple monitor display, please choose adequate graphic cards and disable onboard graphic card in case of any conflicts occur.

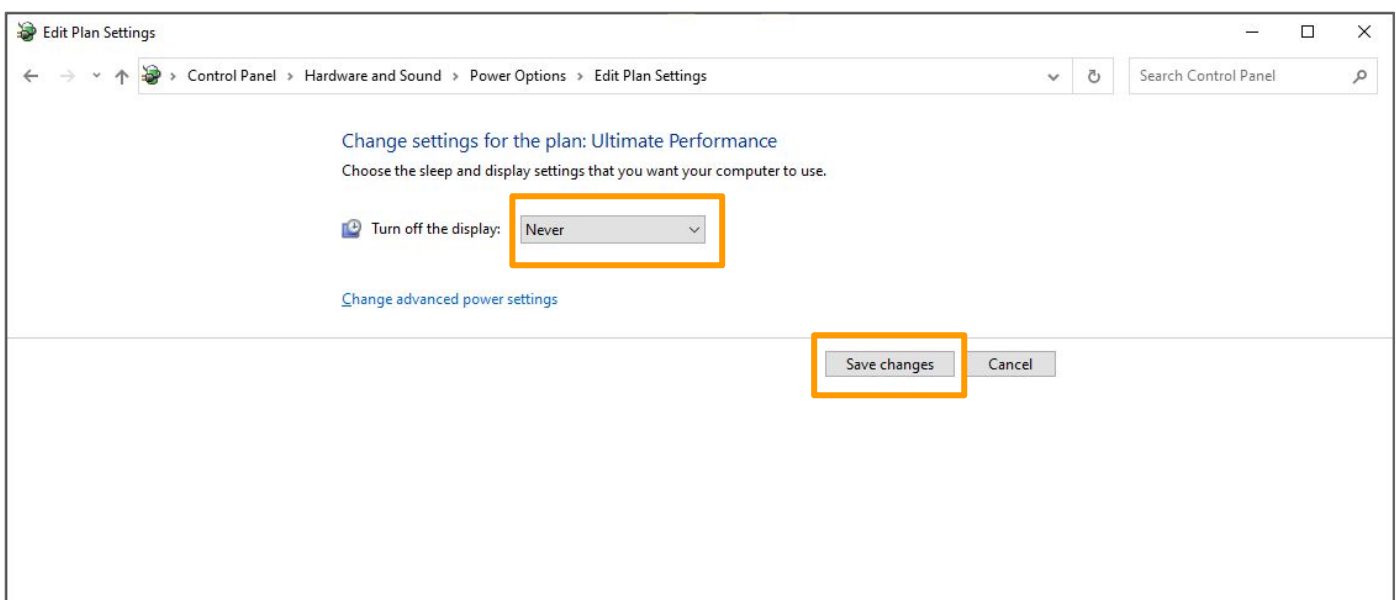
Prerequisite PC Setting

1. Log in Windows account with administrator user level
2. Disable Windows firewall
3. Change the power configuration

Control Panel → Hardware and Sound → Power Options → Change plan settings

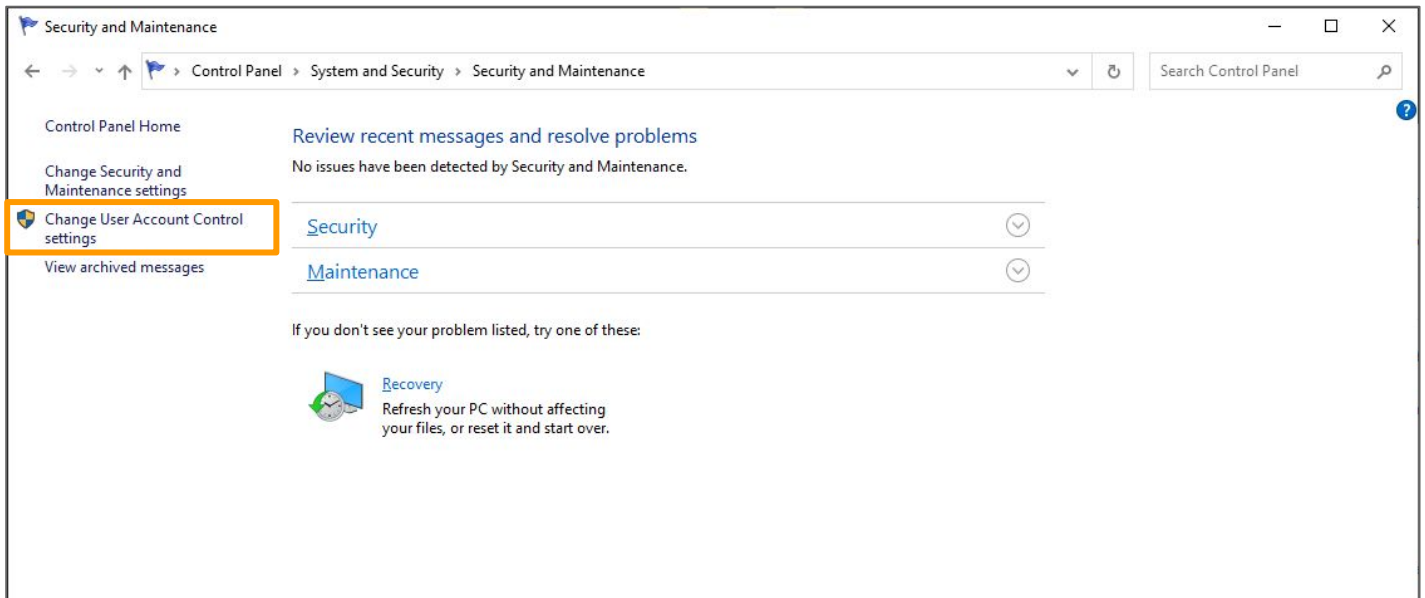


To avoid the abnormal shutdown caused the damage of CMS system while the CMS system is working, please change "Turn off the display" to "Never" → Click "Save changes"

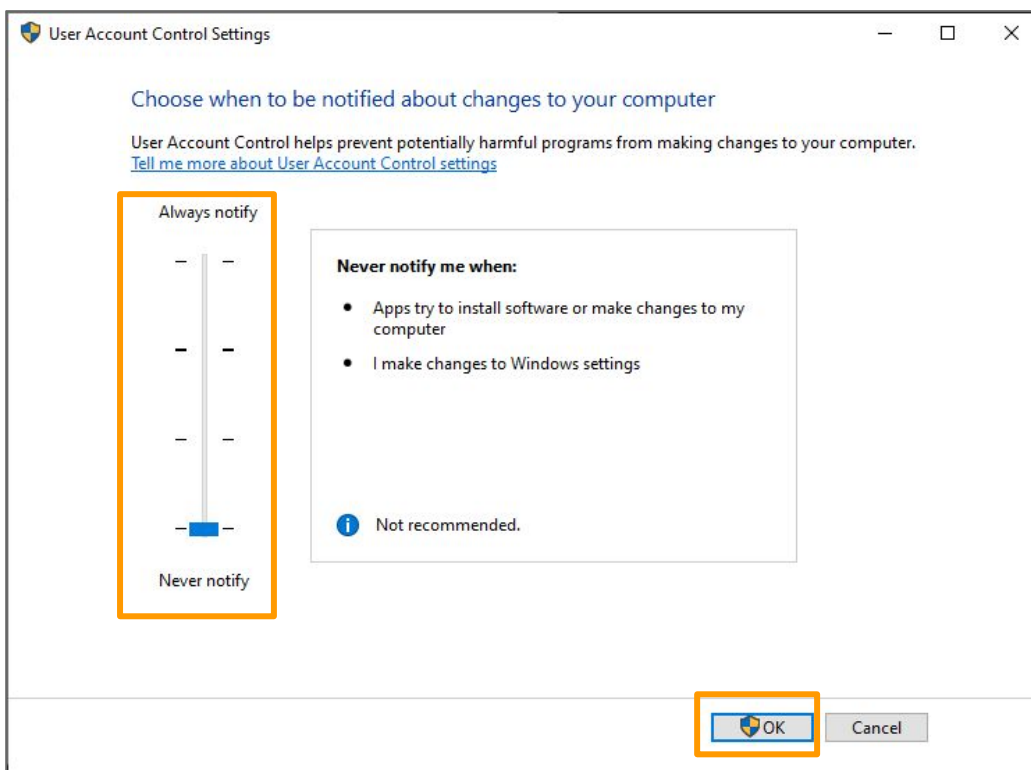


4. Change the user account control settings

Control Panel → System and Security → Security and Maintenance → Change User Account Control settings

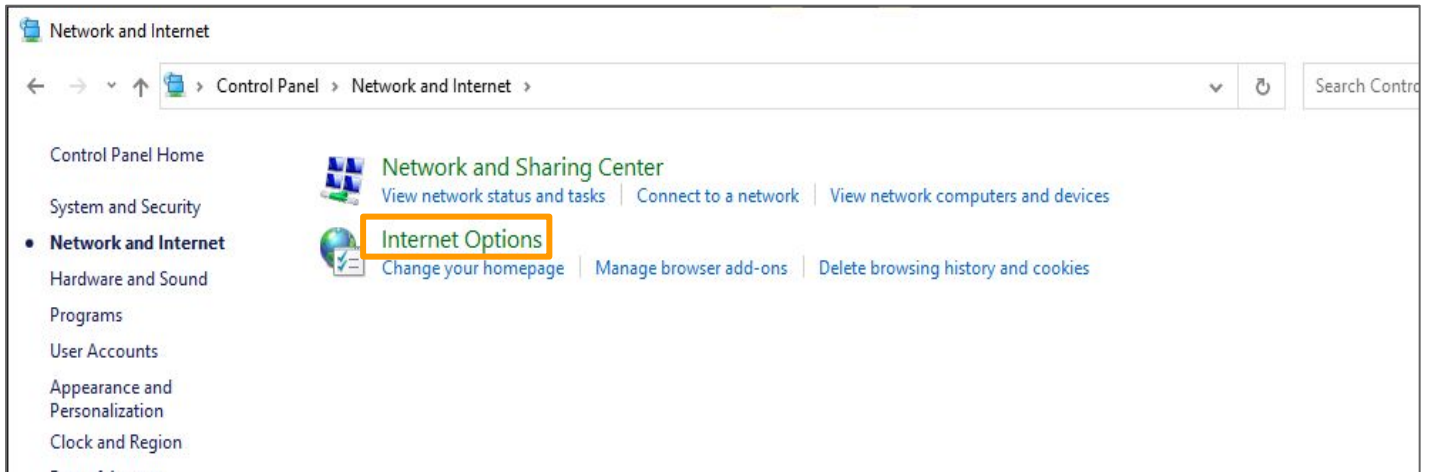


For the popup window not to be blocked while installing or working the CMS system, please adjust the user account control settings to "Never notify" → Click "OK"

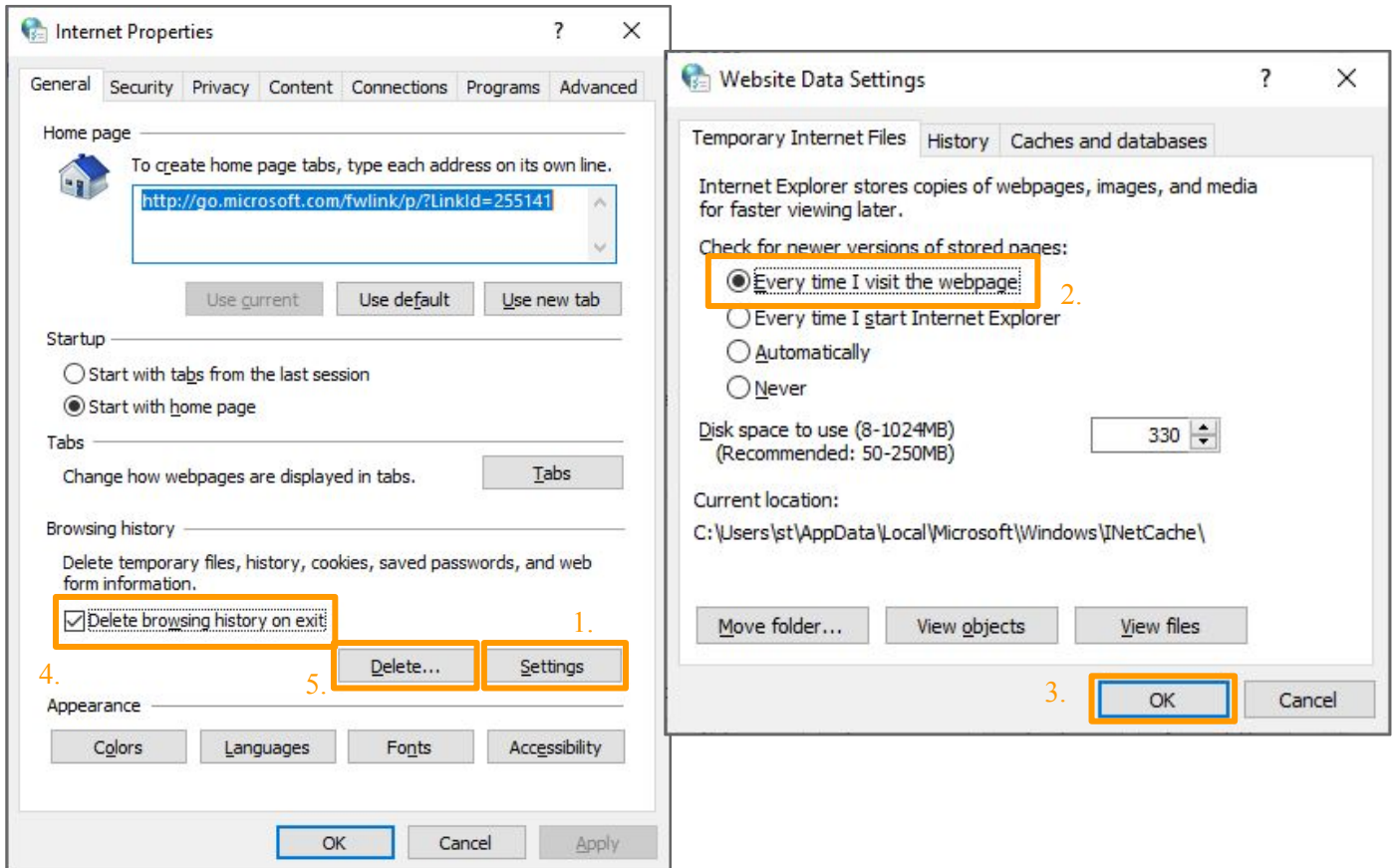


5. Change the internet settings of temporary internet files

Control Panel → Network and Internet → Internet Options

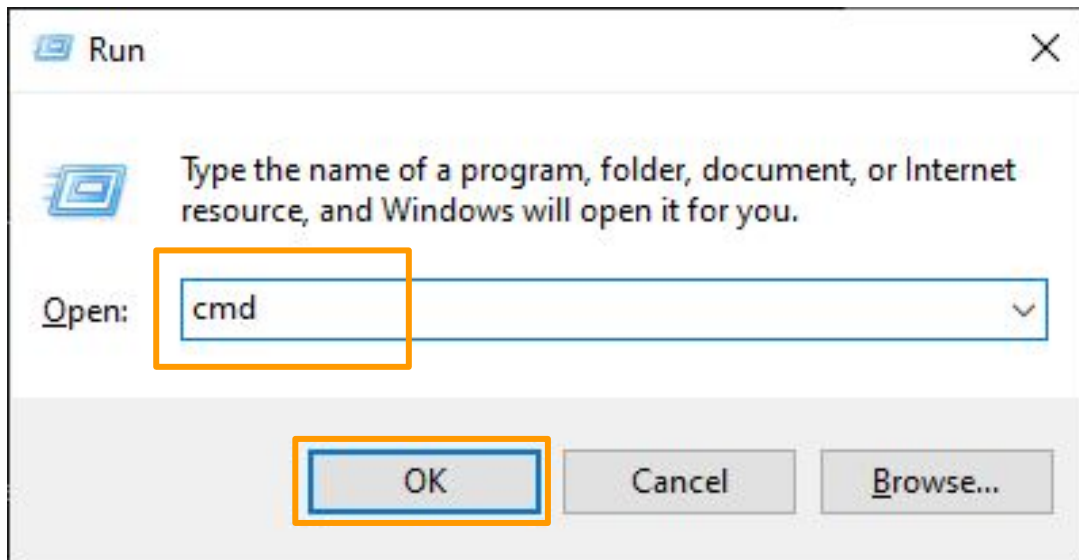


In order not to affect the UI loading of CMS system by the existing cookie, please follow the steps, "Settings" → Check "Every time I visit the webpage" → Click "OK" → Check "Delete browsing history on exit" → Click "Delete"



6. Check if port 80 is occupied by other programs

Step 1. Go to "Run" (Windows+R) → Enter "cmd" → Click "OK"



Step 2. Enter "**netstat -nao | find "0.0.0.0:80"**" → Click "Enter" to execute the command

```
C:\> netstat -nao | find "0.0.0.0:80"
TCP        0.0.0.0:80    0.0.0.0:0    LISTENING  4116
```

Step 3. Enter "**tasklist /fi "pid eq PID number"**" → Click "Enter" to execute the command

```
C:\> tasklist /fi "pid eq 4116"

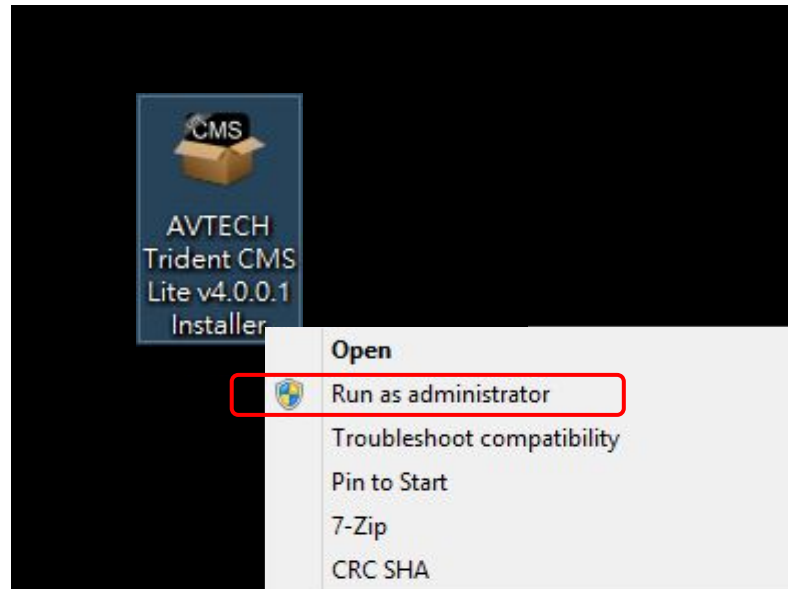
Image Name           PID Session Name        Session#    Mem Usage
=====
skype.exe            4116 Console              0           6,476 K
```

Step 4. To close the program or service, please enter "**taskkill /pid PID number /F**" → Click "Enter" to execute the command

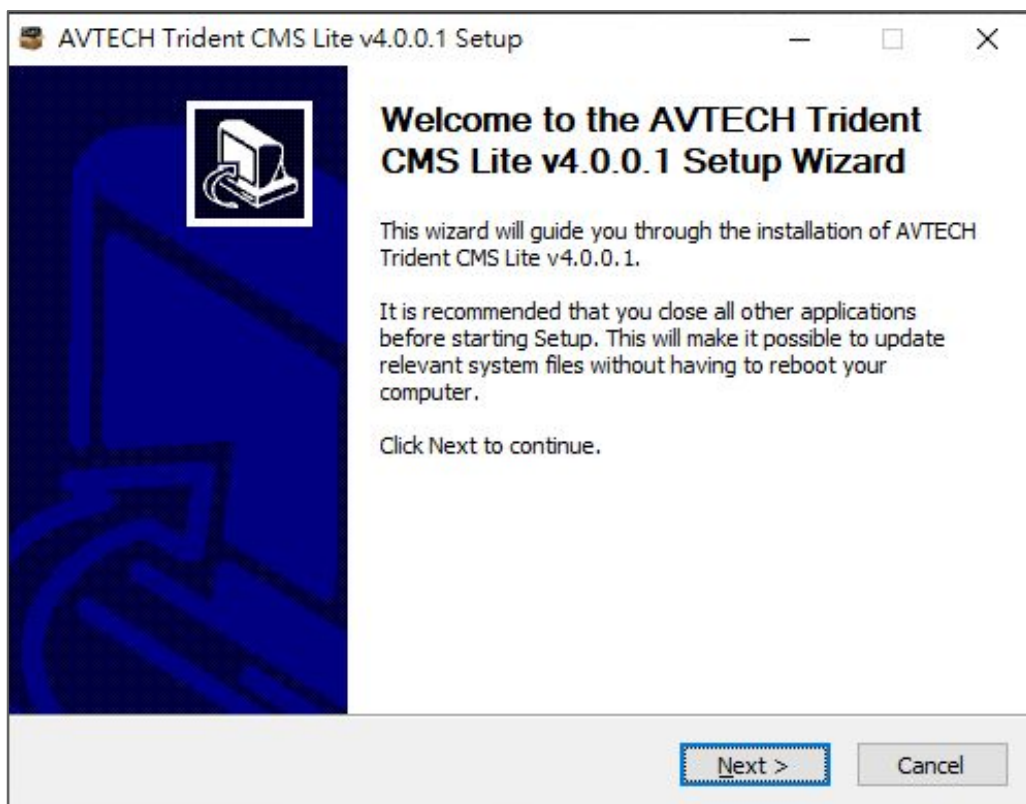
```
C:\> taskkill /pid 4116 /F
SUCCESS: The process with PID 4116 has been terminated.
```

Overall Steps

1. Start Install Application
2. Enter Main Interface
3. Check Hardware Requirements
4. Choose Install Location
5. Start Running Installer
6. Install Necessary Packs
7. Installation Complete
8. Reboot Computer



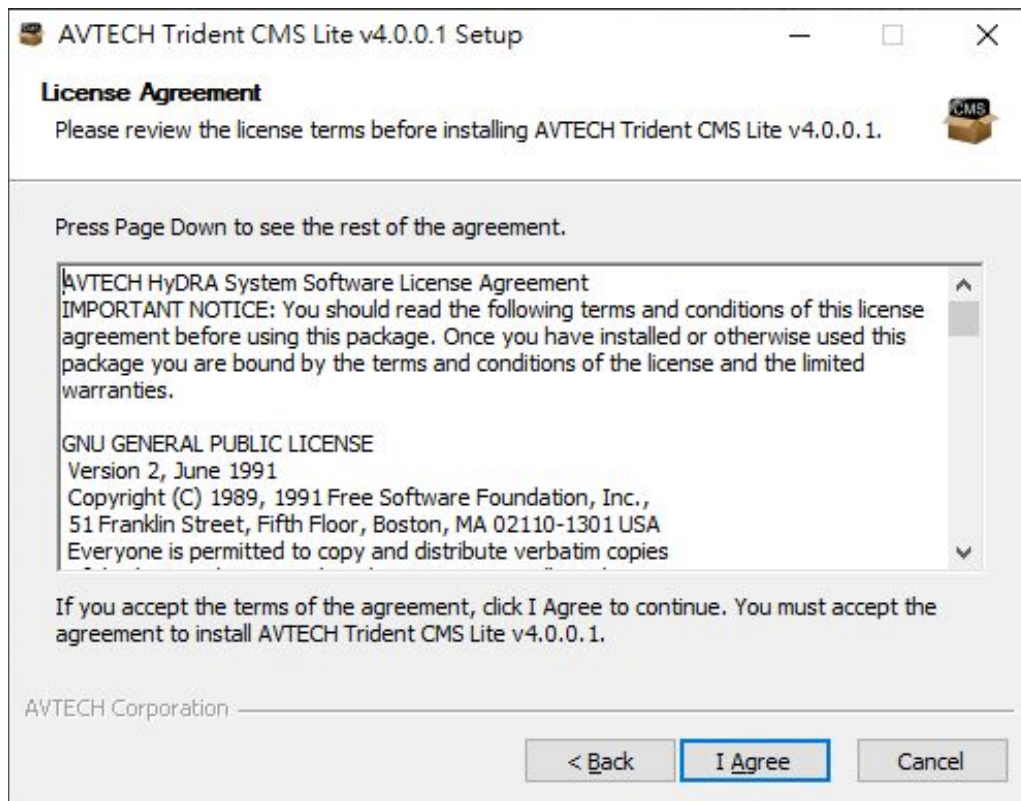
(Step 01 - Start Install)



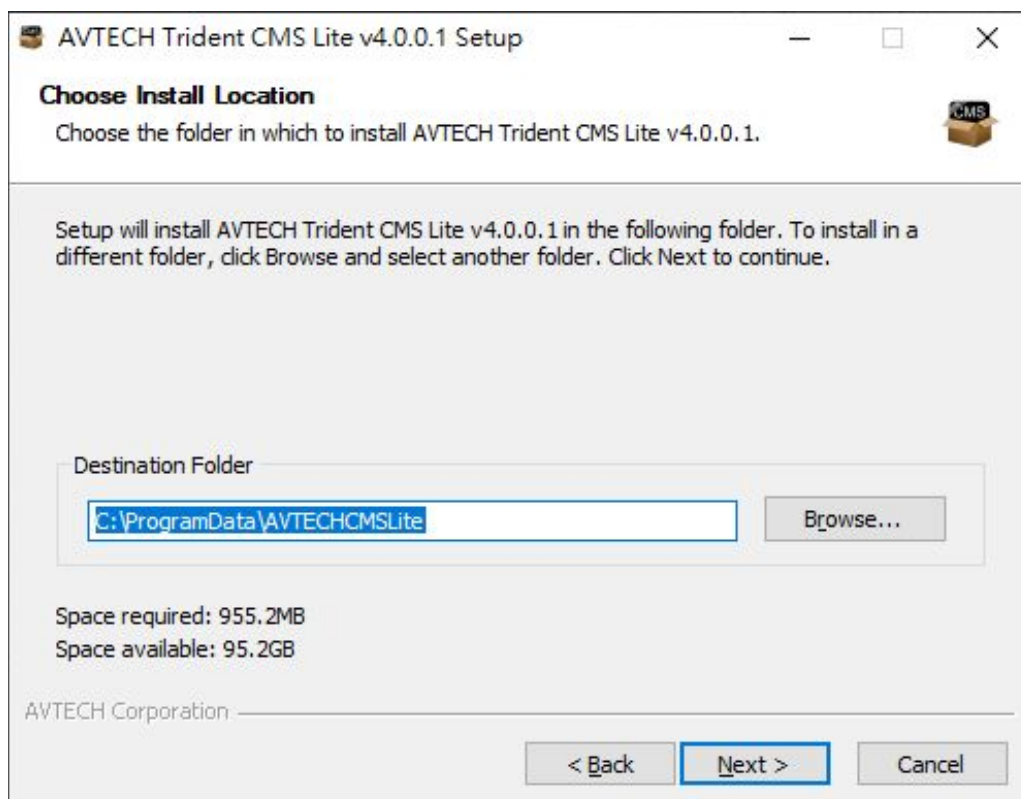
(Step 02 - Enter Main Interface)

Installation

Procedure (Step 3 and 4)



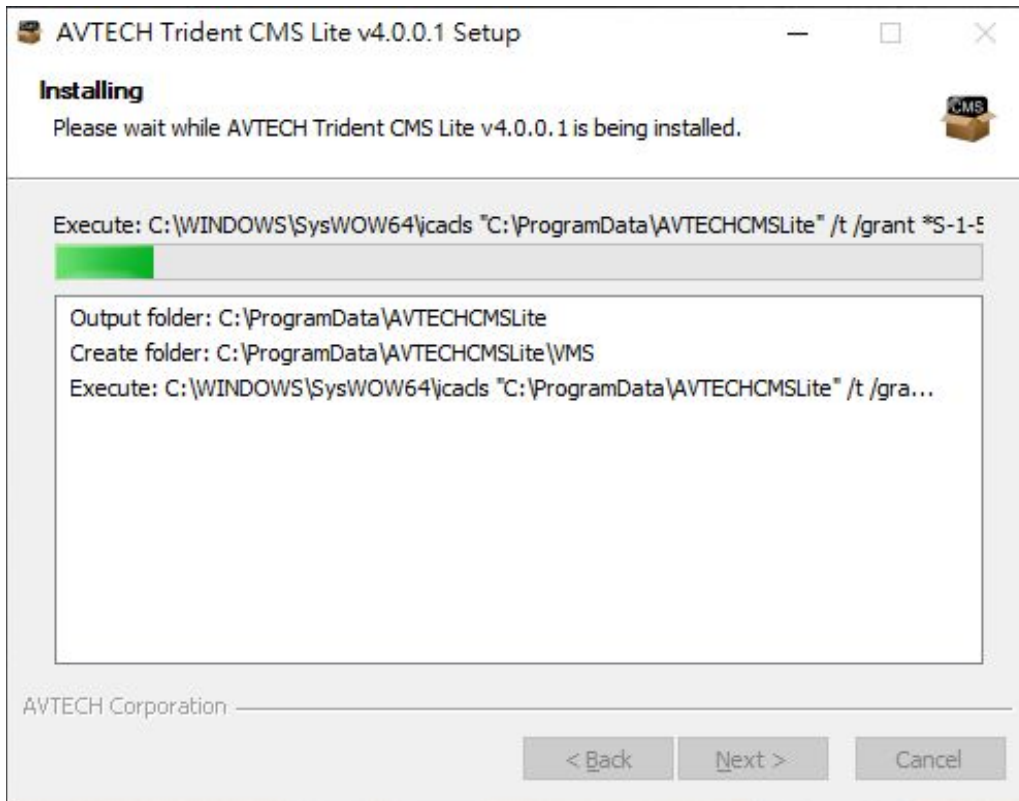
(Step 03 - License Agreement)



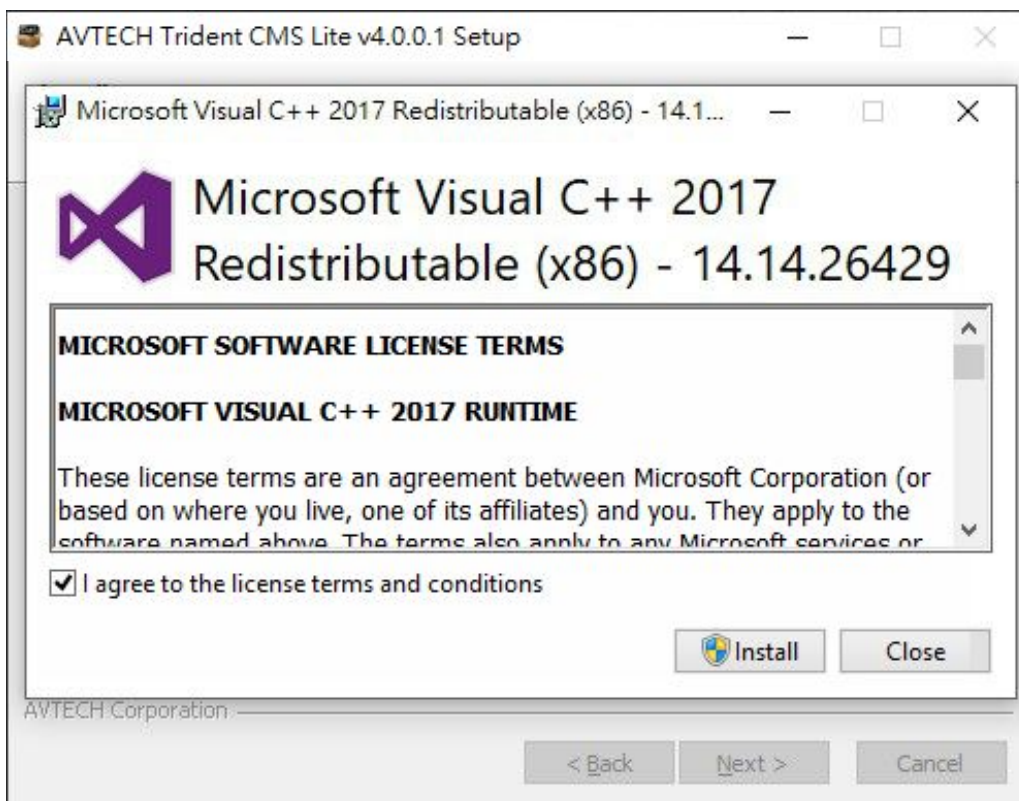
(Step 04 - Choose CMS Install Location)

Installation

Procedure (Step 5 and 6)



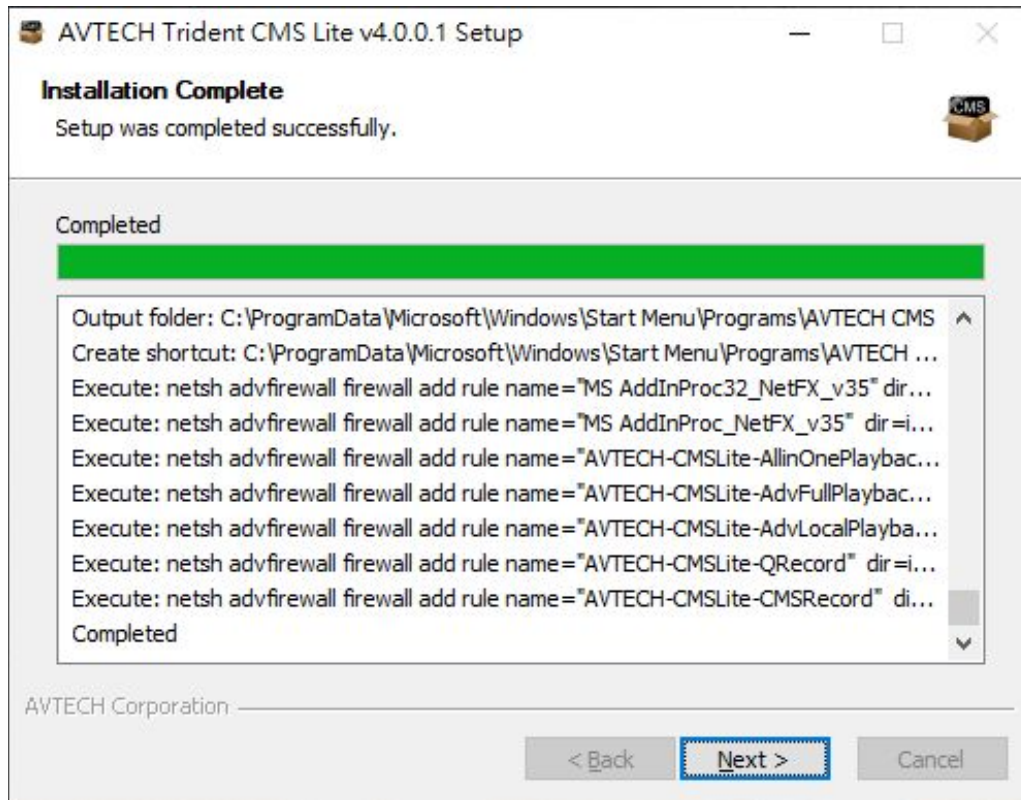
(Step 05 - Execute CMS Installation)



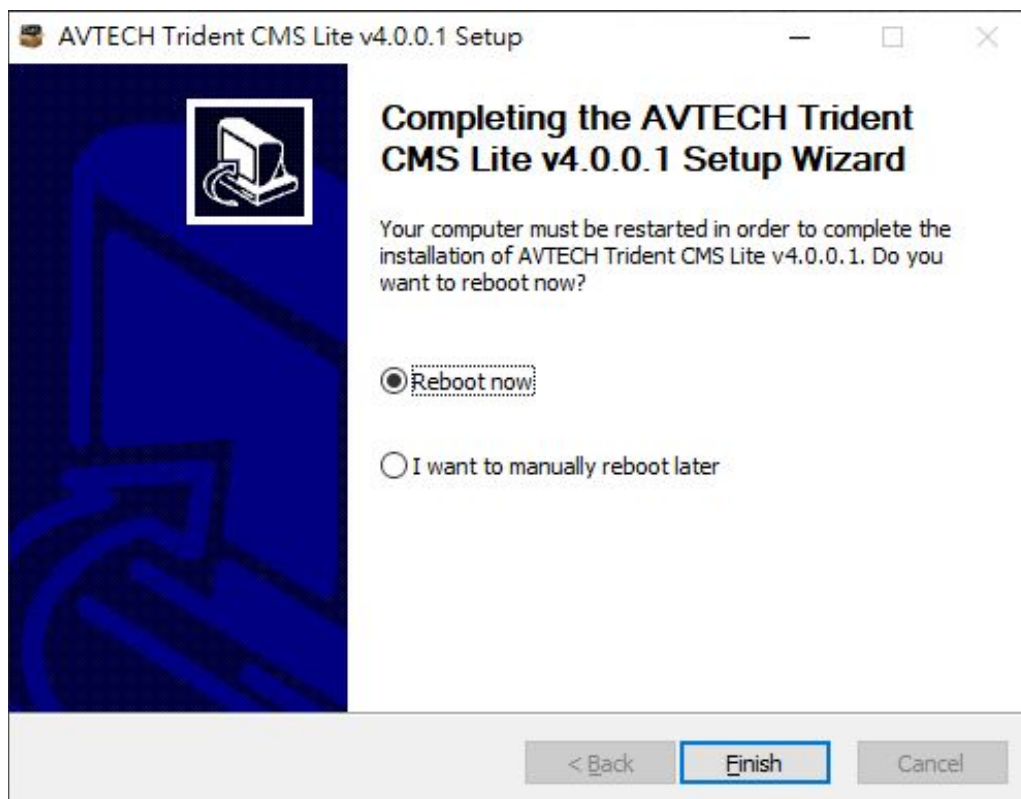
(Step 06 - Install Necessary Packs)

Installation

Procedure (Step 7 and 8)



(Step 07 - Make Sure the Install Completed)



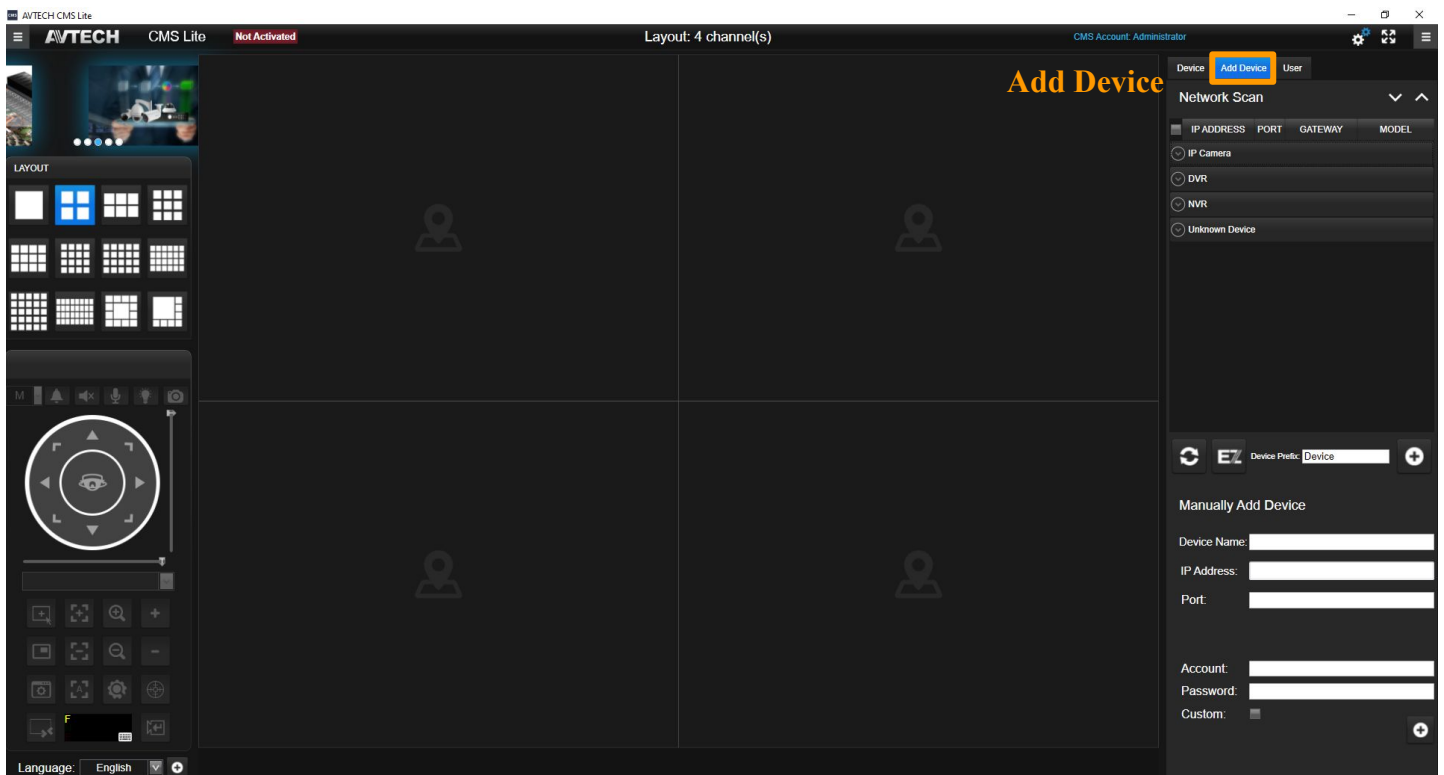
(Step 08 - Restart Windows Operating System)

CMS Lite

Starting CMS Lite...



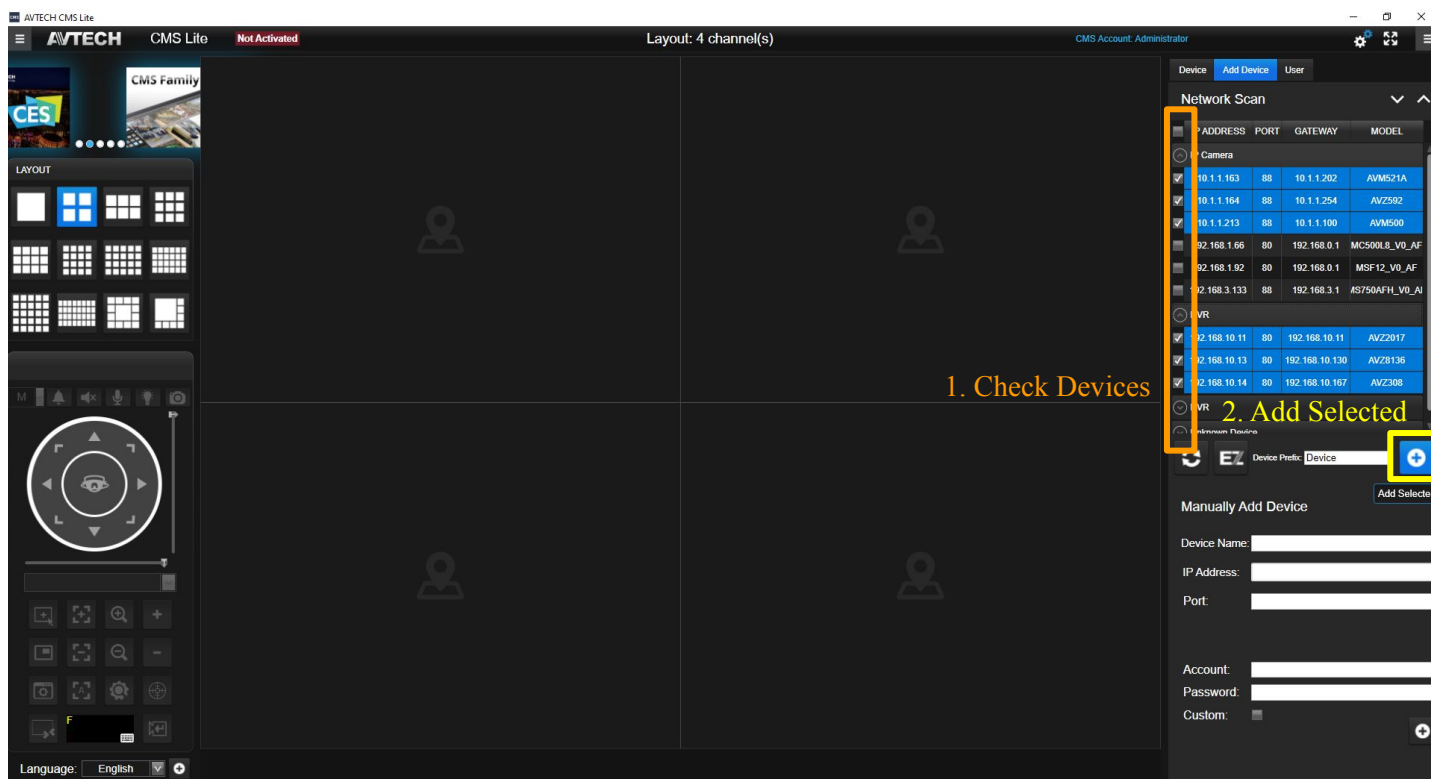
(1. Activate CMS)



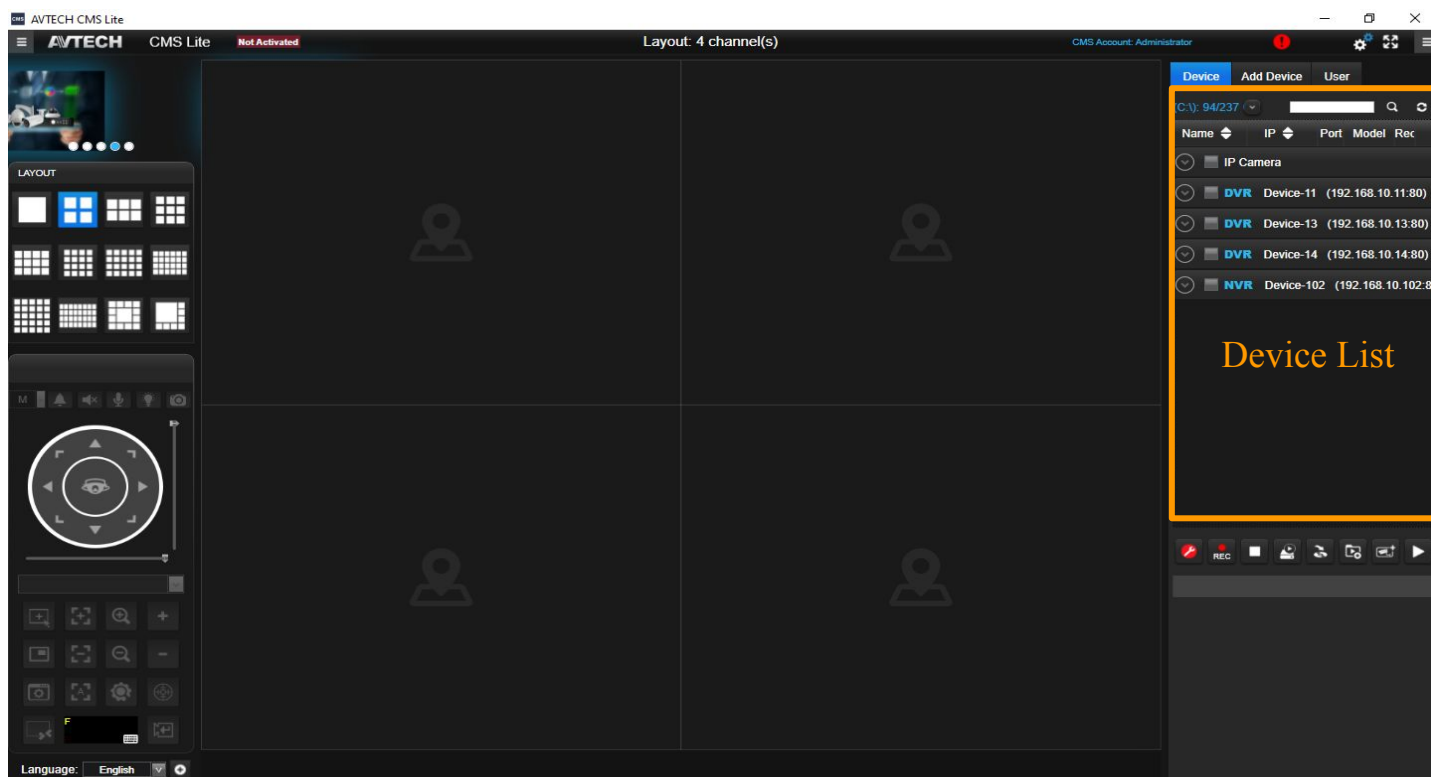
(2. Click "Add Device")

Quick Start

Add Devices

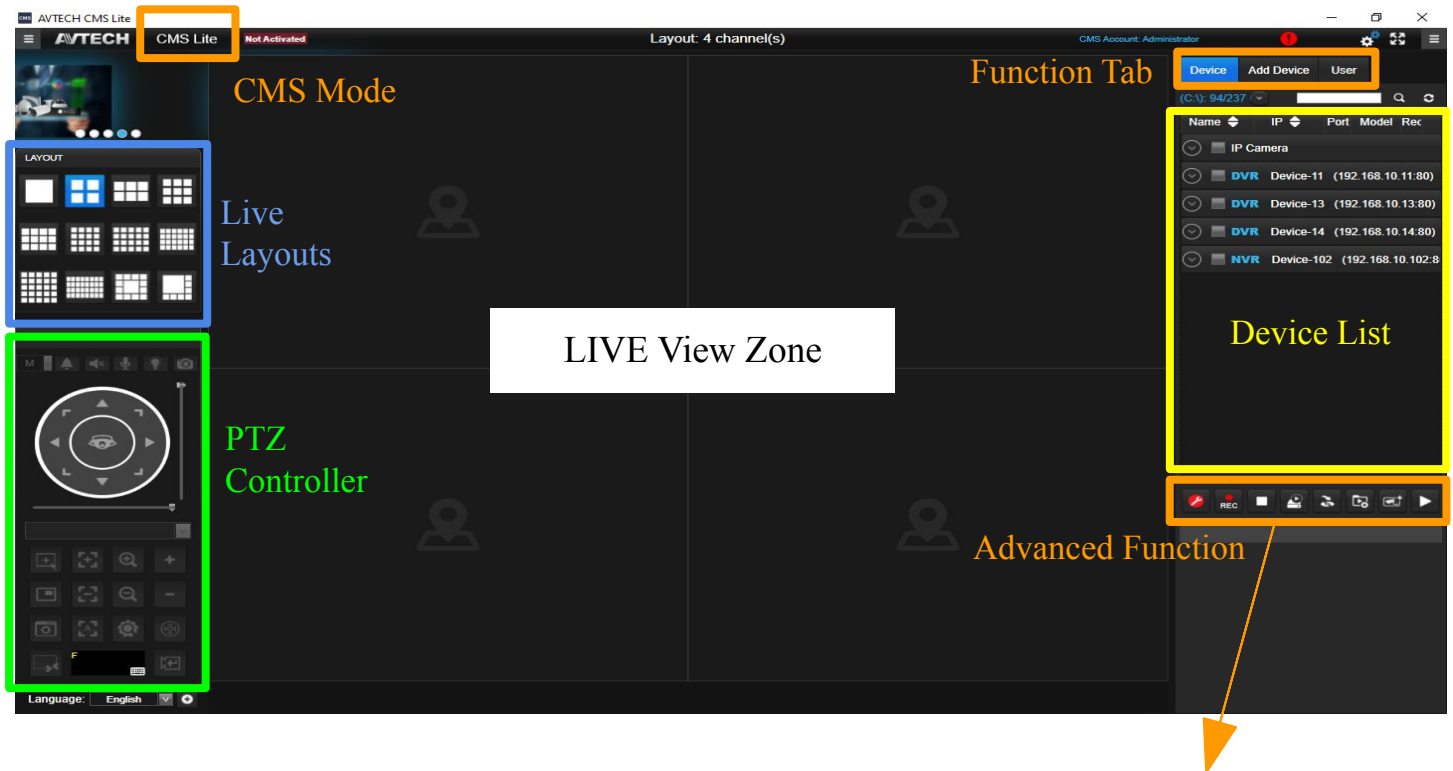


(3. Check the needed devices and click "Add Selected" → Wait for the system complete)



(4. The devices will display in the "Device List")

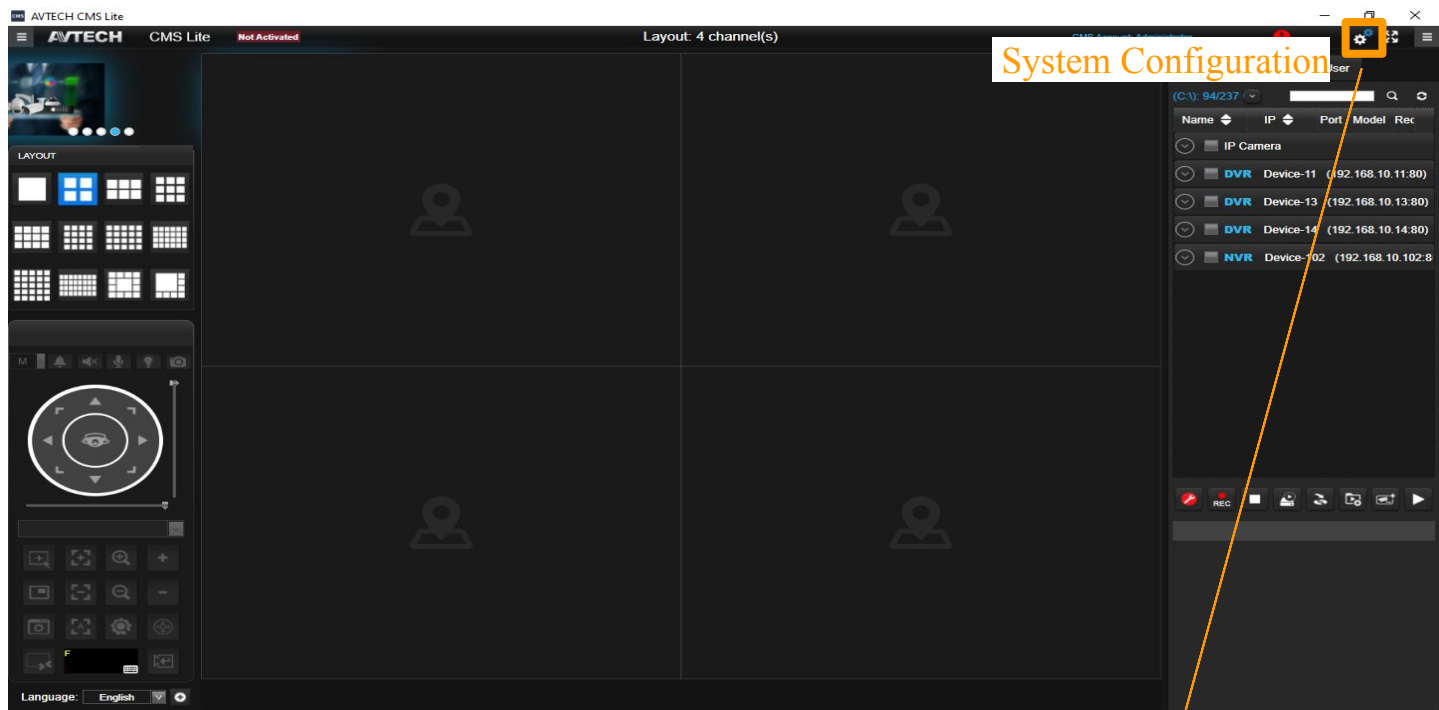
Control Panel Overview



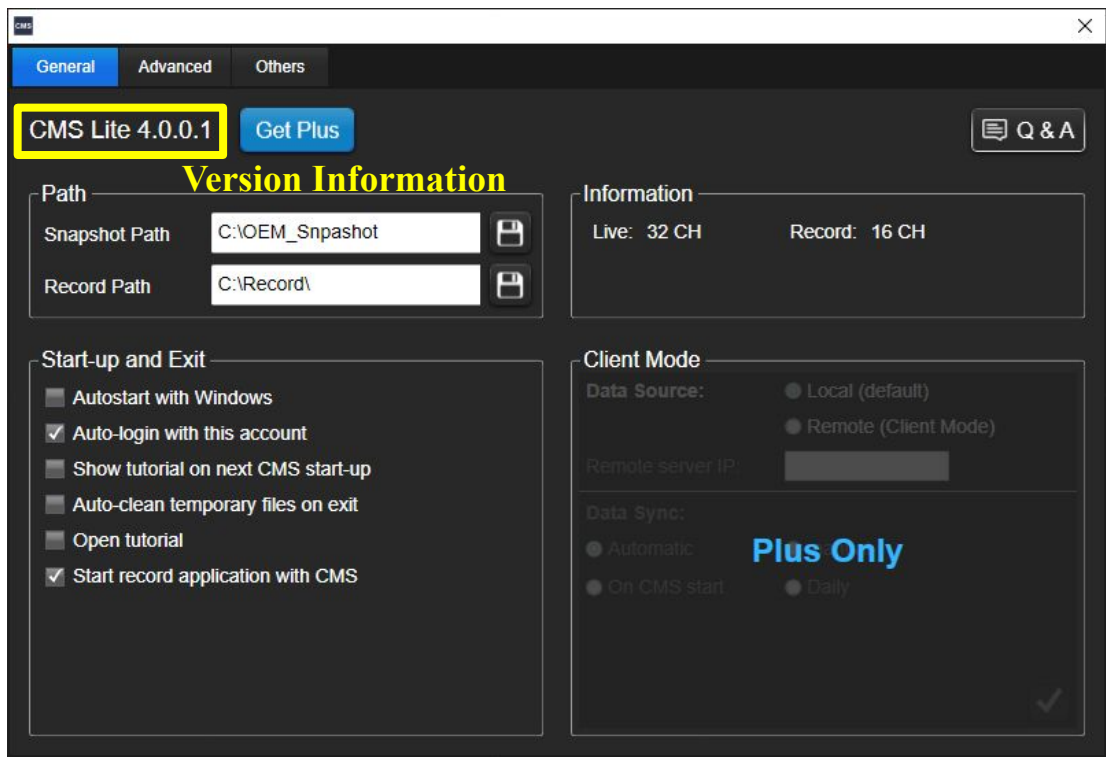
Function	Icon	Description
Record Setting		Alter record setting
Start Recording		Start record for the selected devices
Stop Recording		Stop record for the selected devices
Recording Playback		Playback record video from the CMS recorder
Backup Recording		Backup record data
Add to Group		Add the selected devices to the video group and play live
Add to Live		Add the selected devices to the Live View Zone
Device Playback		Playback record video from the IP Cameras

Control Panel Overview

System Configuration








General and Advanced Setting



Control Panel Overview

Record Setting



Function	Icon	Description
Reload		Update all the devices to the latest status
Set Folder		Setup the folder location of the selected device
Setup		Initiate device's record setting
Clear		Erase device's record setting
Advanced Setting		Setup local disk, remote assess and edge record

Control Panel Overview

Device and Local Playback



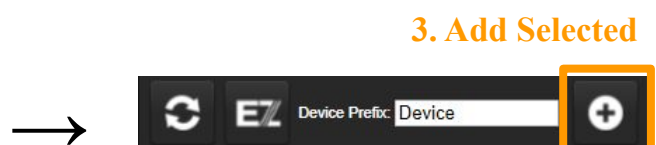
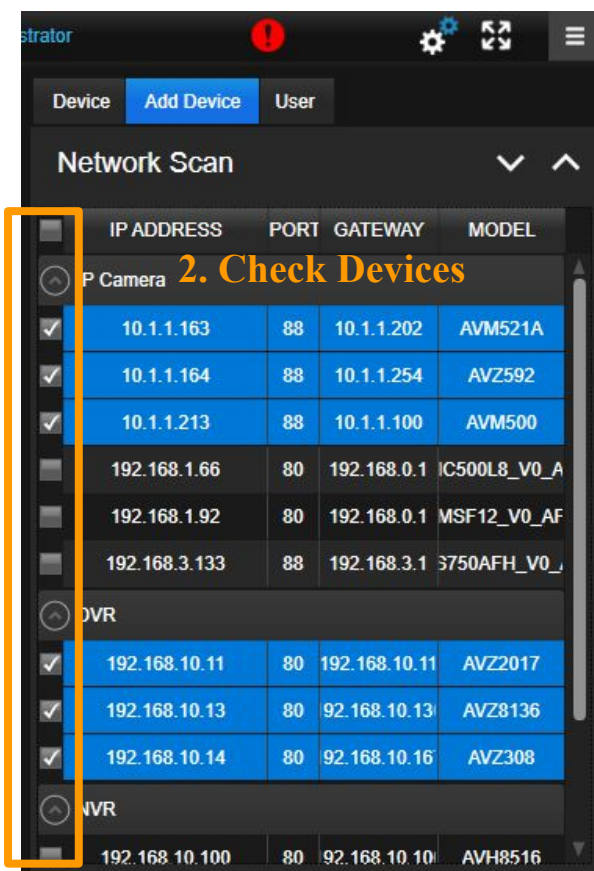
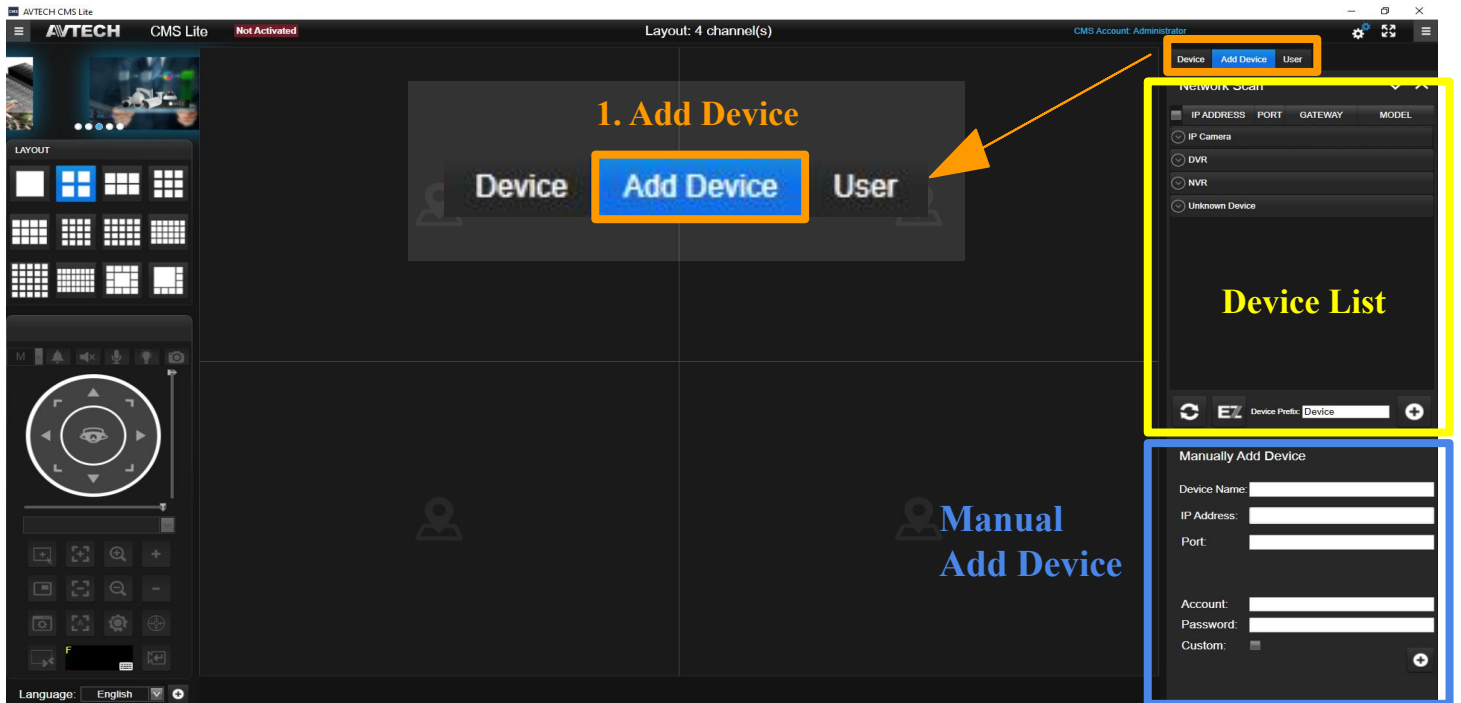
Video Function		
Function	Icon	Description
Play		Play video
Pause		Pause video
Forward		Fastforward the video up to 32X
Rewind		Backward the video up to 32X
Custom Display		Alter display
Slow		Slow down video speed
Snapshot		Quick screen shot

Advanced Function		
Function	Icon	Description
Timeline Controller		Adjust timeline display
Quality		Adjust picture quality
Calendar		Change the playback date
Event List		Playback event
Close		Close the window

Device Area

Add Devices

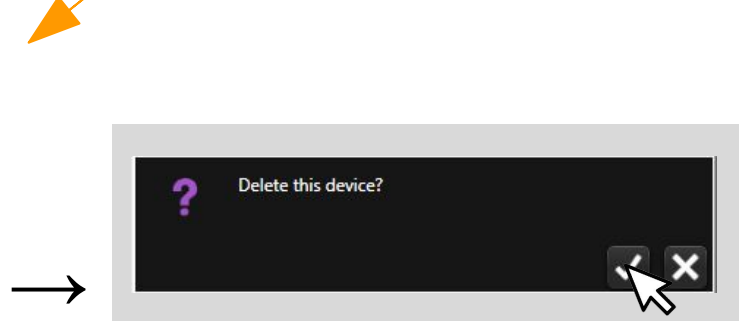
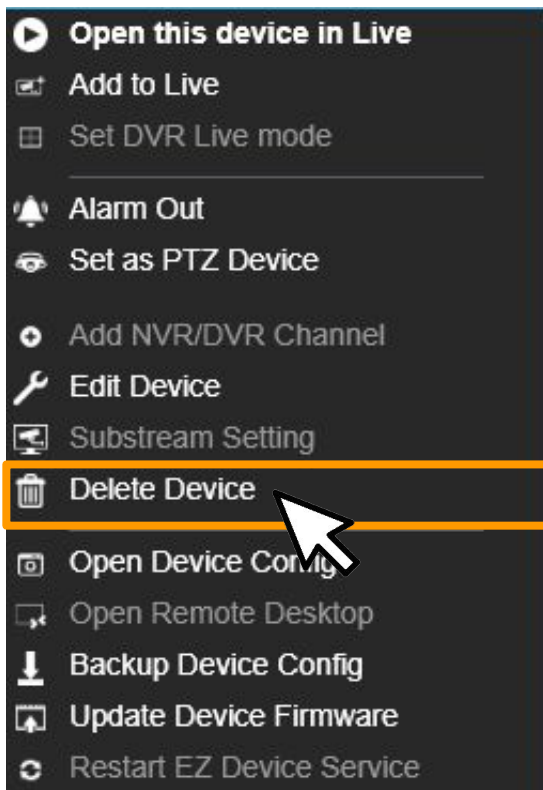
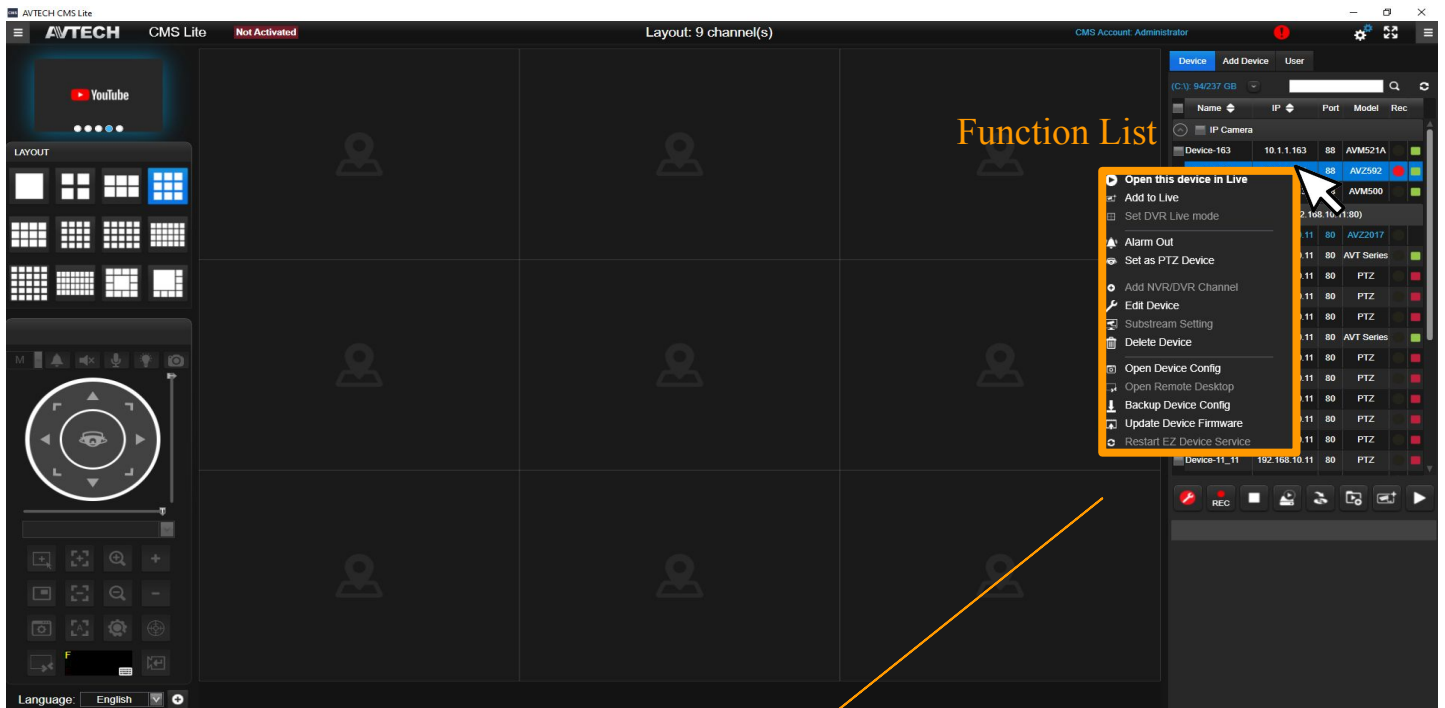
Click "Add Device" → Check the needed devices → Click "Add Selected" → Wait for the system complete



Device Area

Delete Devices

Choose the needed device to delete by click the right click → Click "Delete Device"



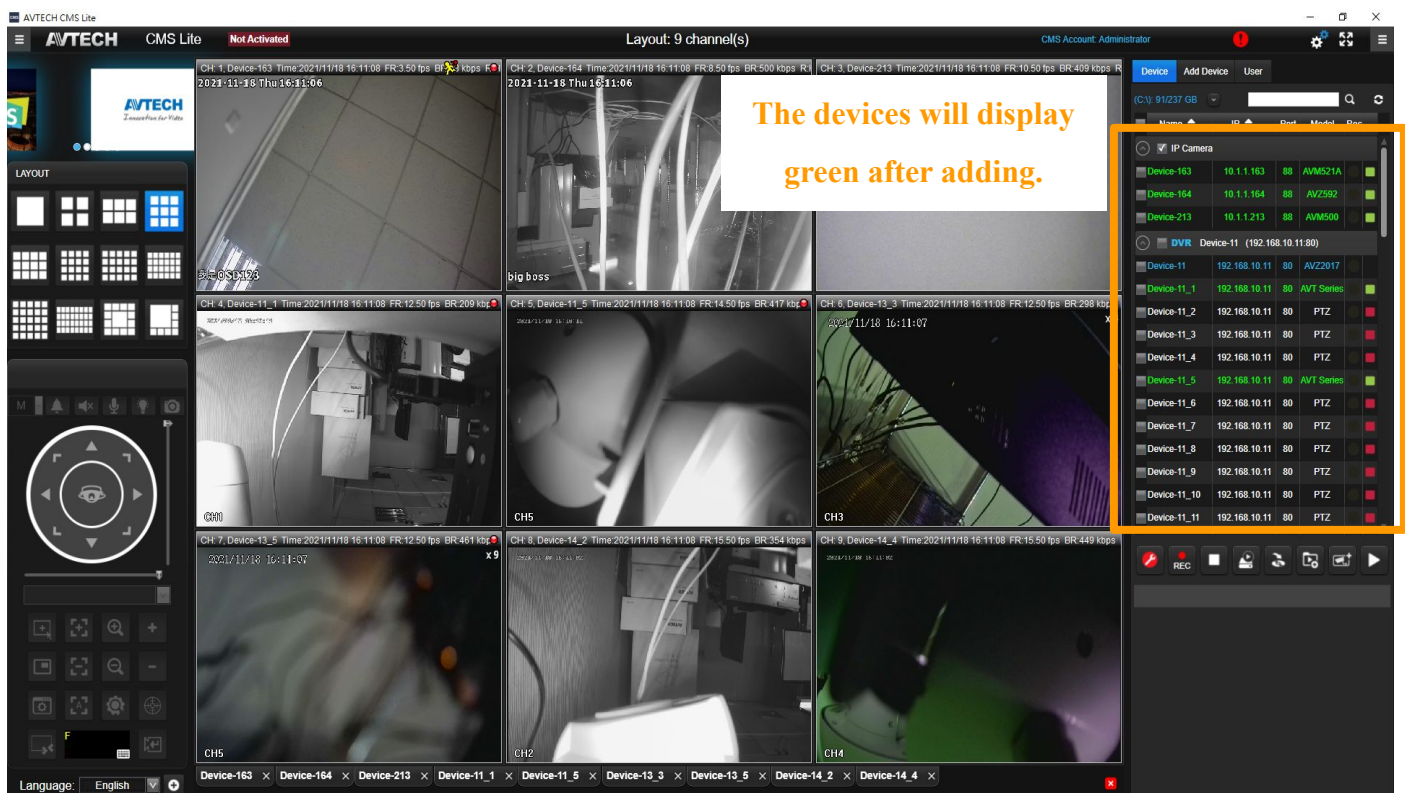
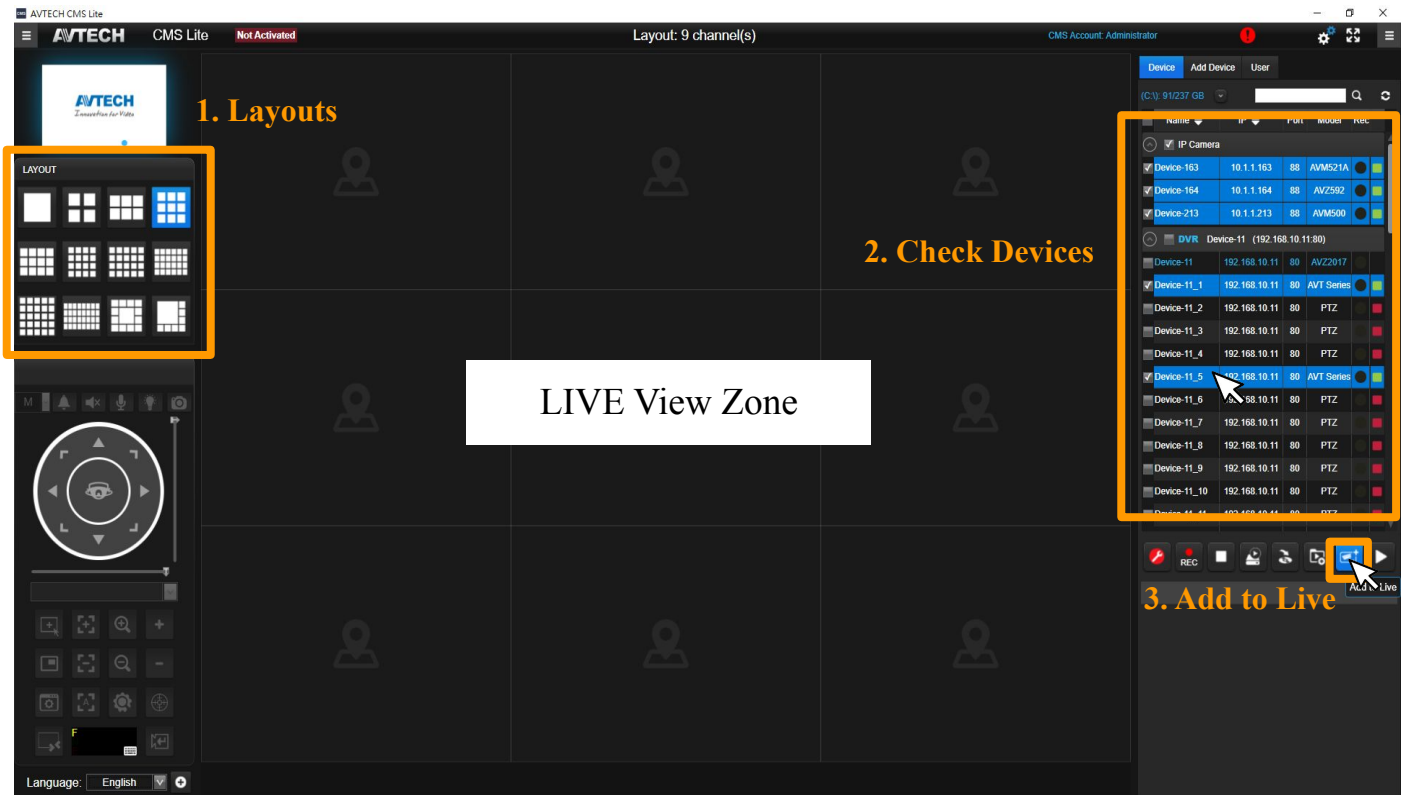
Delete Confirmation

Display Layouts

Add to Live

Add devices to the LIVE View Zone.

Choose a needed layout to display your devices → Check the needed devices → Click "Add to Live" → Wait for the image appear

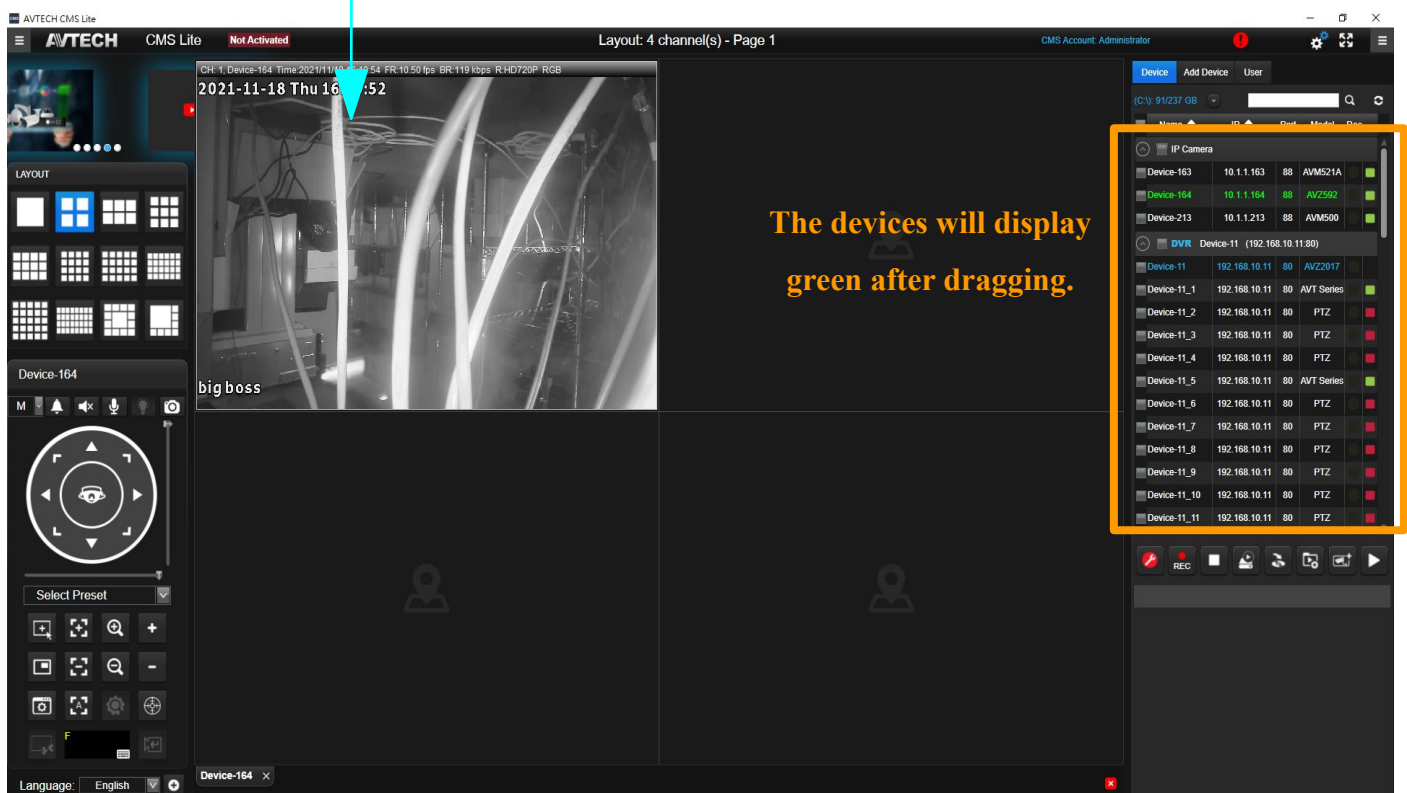
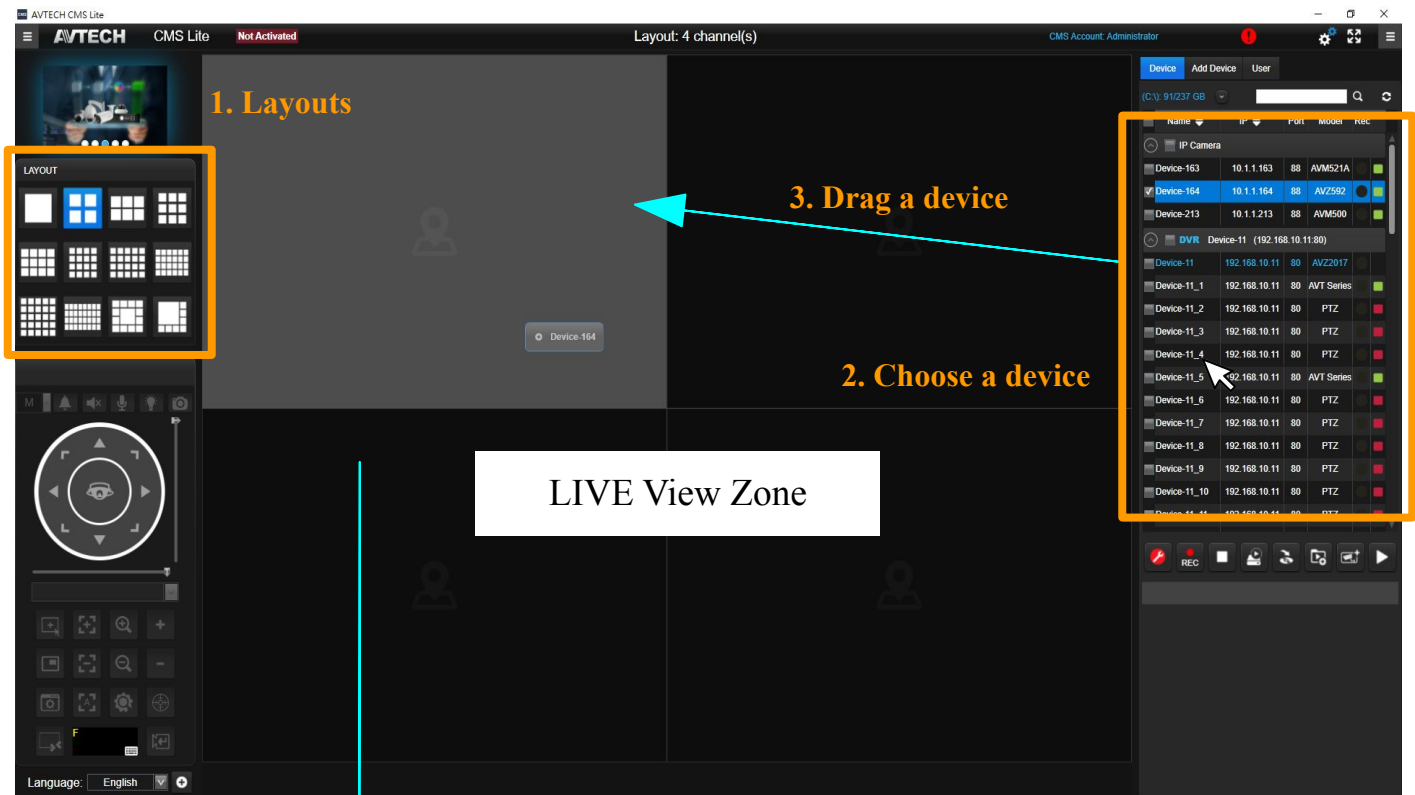


Display Layouts

Drag a device

Add devices to the LIVE View Zone.

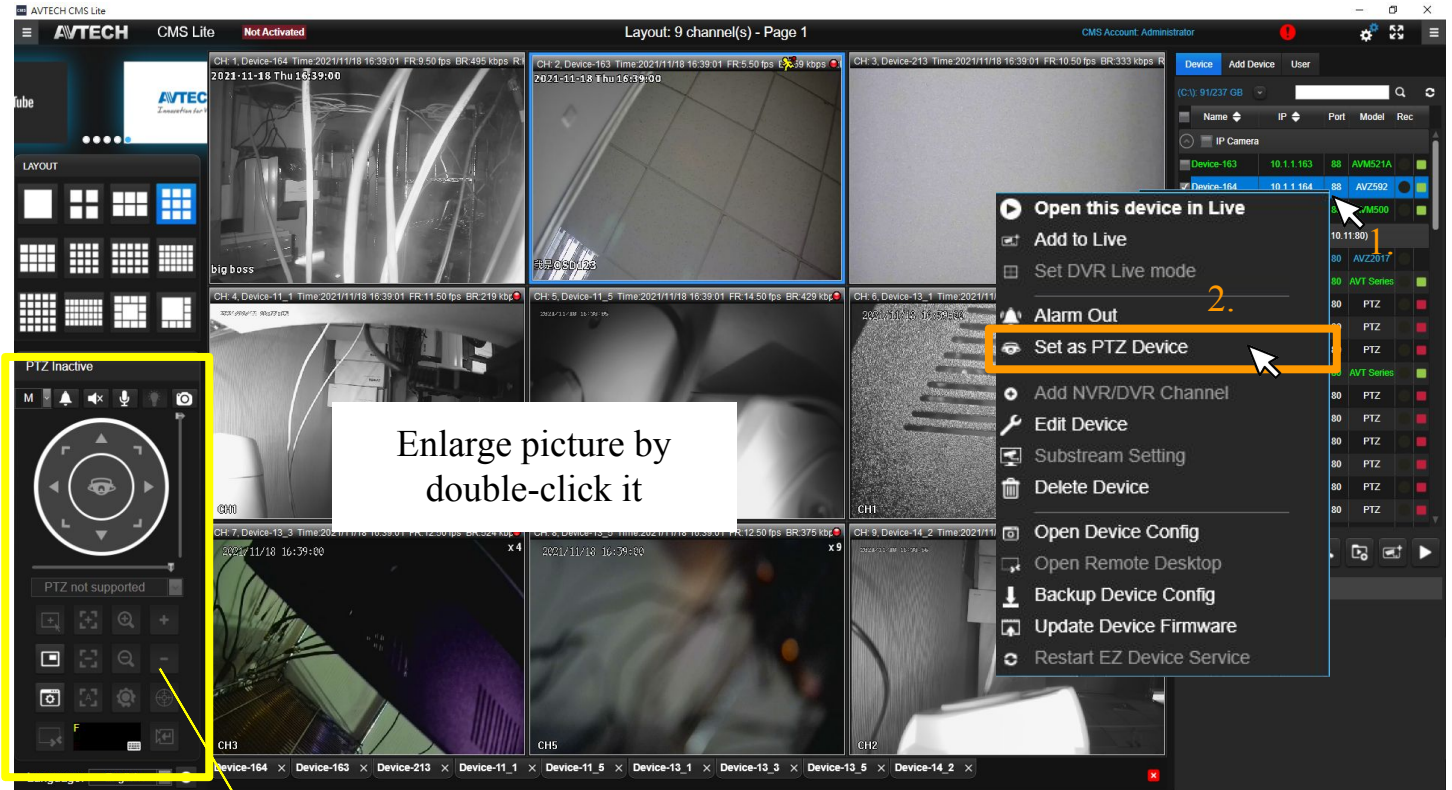
Choose a needed layout to display your devices → Click on a needed device by the left click and drag it to one of the columns → Wait for the image appear



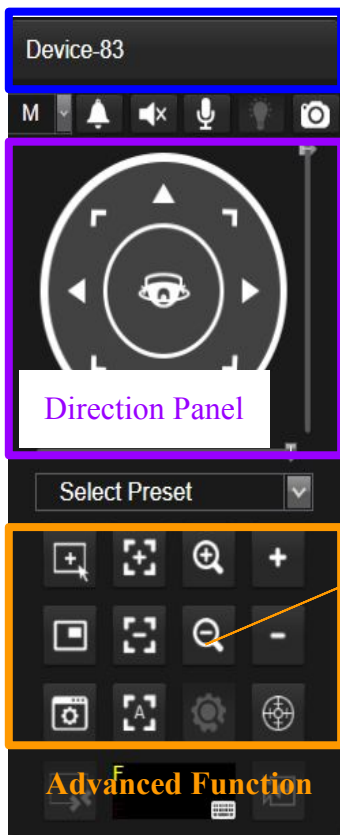
PTZ Control Panel

Supporting the device which equipped with PTZ function.

If inactive, by clicking right click on a needed device → Click "Set as PTZ Device"



Device Name (If unavailable, it wil show "PTZ Inactive")

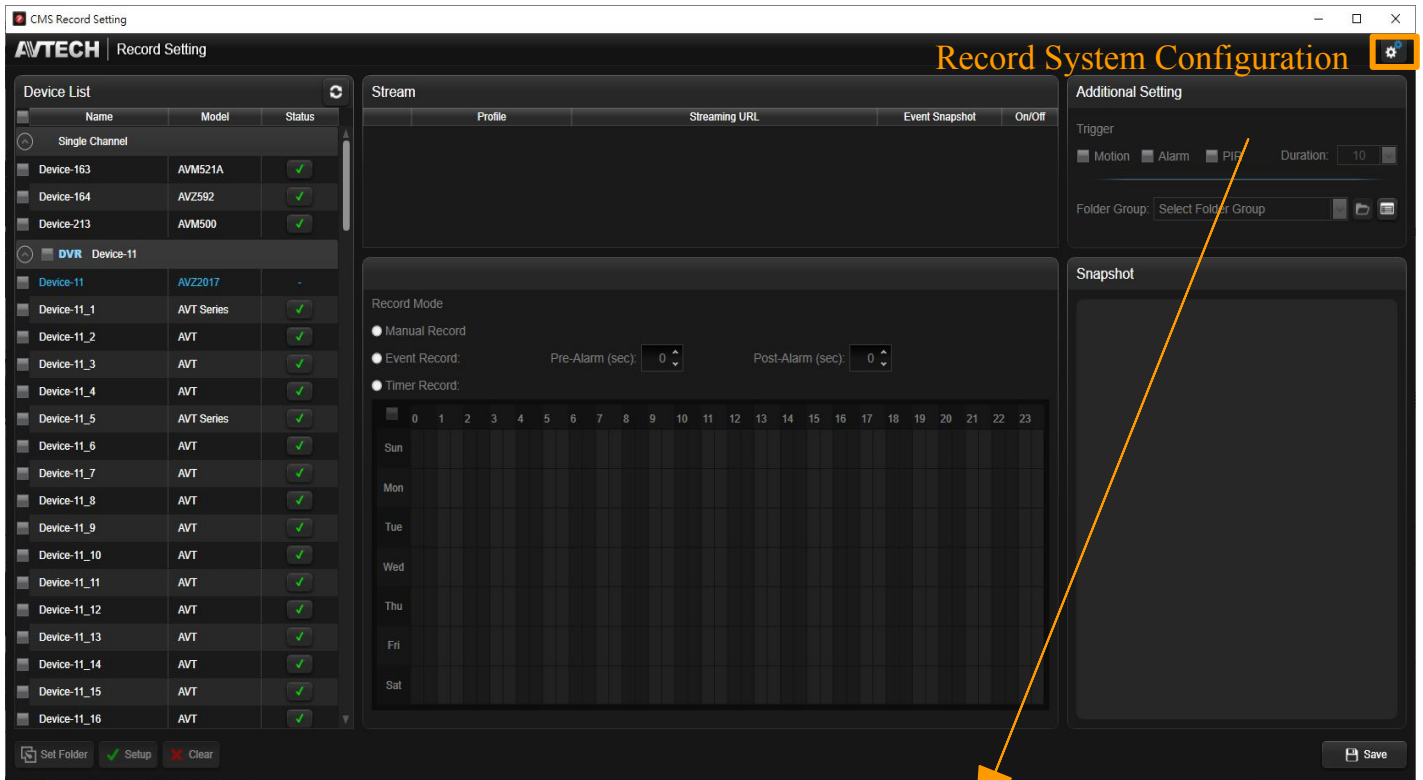


Function	Icon	Description	Function	Icon	Description
Hotpoint		Click to the position	Zoom In		Pull-in picture
DPTZ		Partial enlarge	Zoom Out		Pull-out picture
Focus In		Adjust definition	Zoom In Max		Pull-in picture to maximum
Focus Out		Adjust definition	Zoom Out Max		Pull-out picture to maximum
Autofocus		Auto-adjust definition	Auto Track		Auto-adjust picture

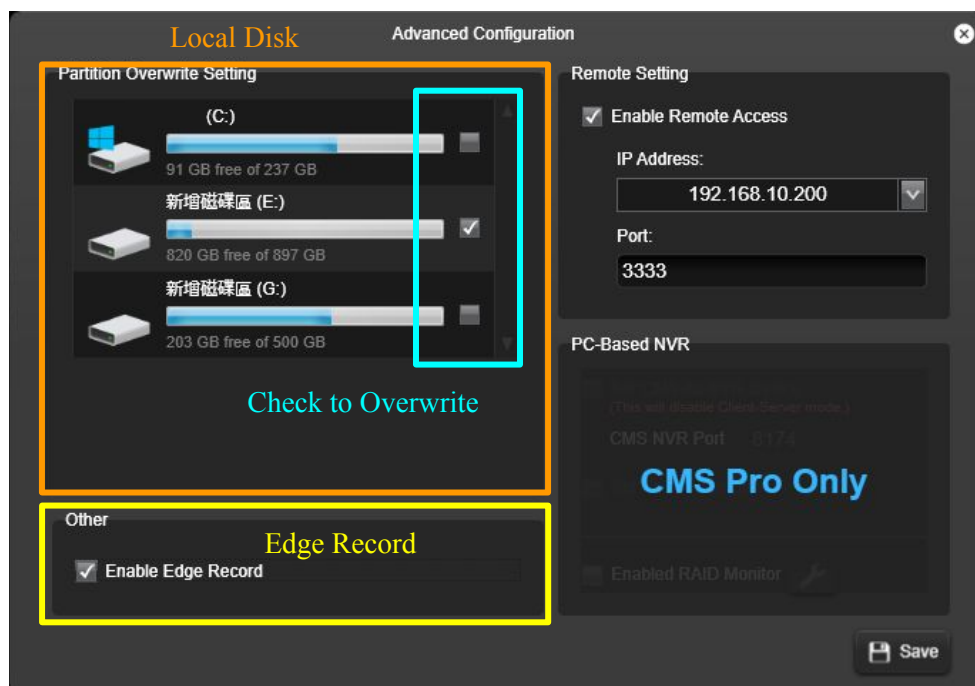
Record

Local Disk Overwrite and Edge Record

Before start recording, please setup local disk overwrite, edge record, and other record related settings.



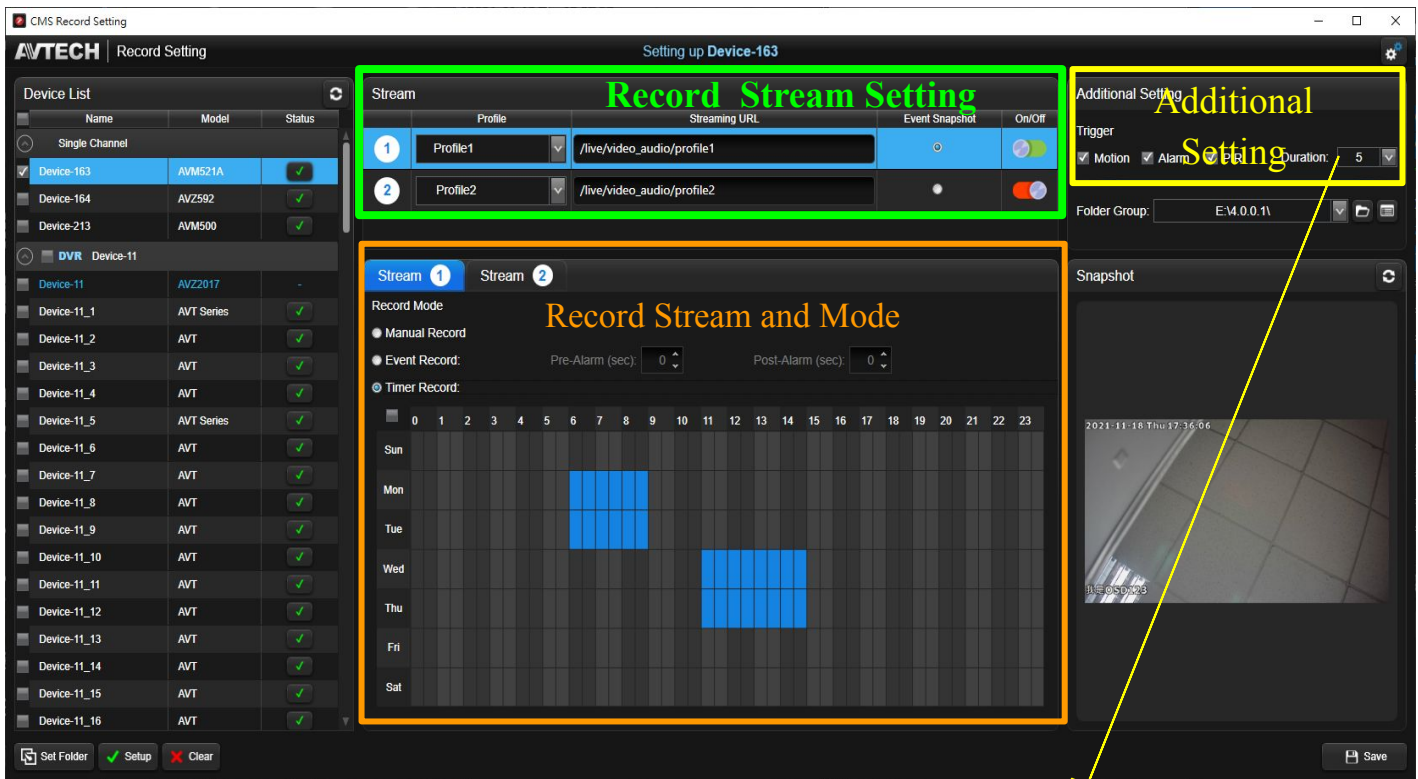
1. Setup overwrite can erase the older record data automatically when out of space.
2. Setup edge record can get the missing date automatically back to the CMS system.



Record

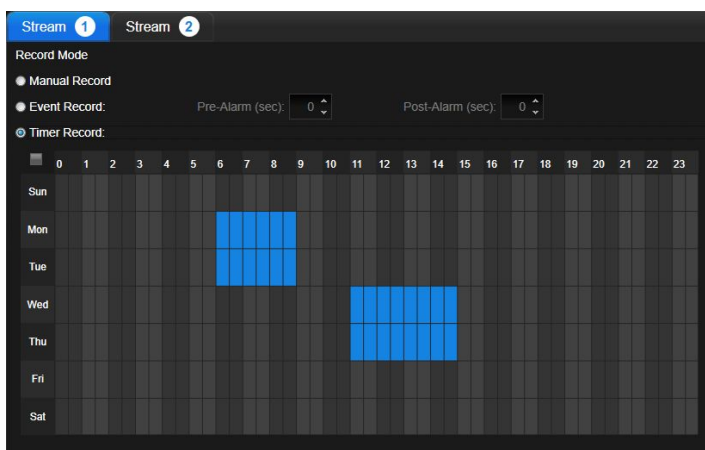
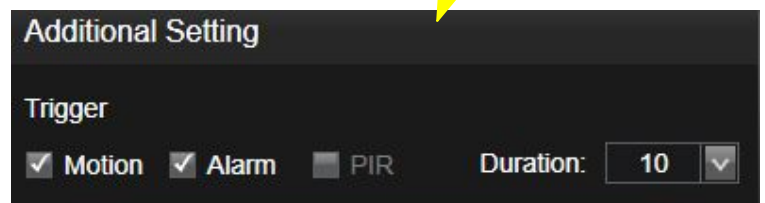
Adjust Setting to the Individuals

Record stream, additional setting and mode can be set individually to a single device.



→ Additional Setting - Trigger

Check the trigger rules and choose the duration time. Any event occurs, it will show on Event Playback.

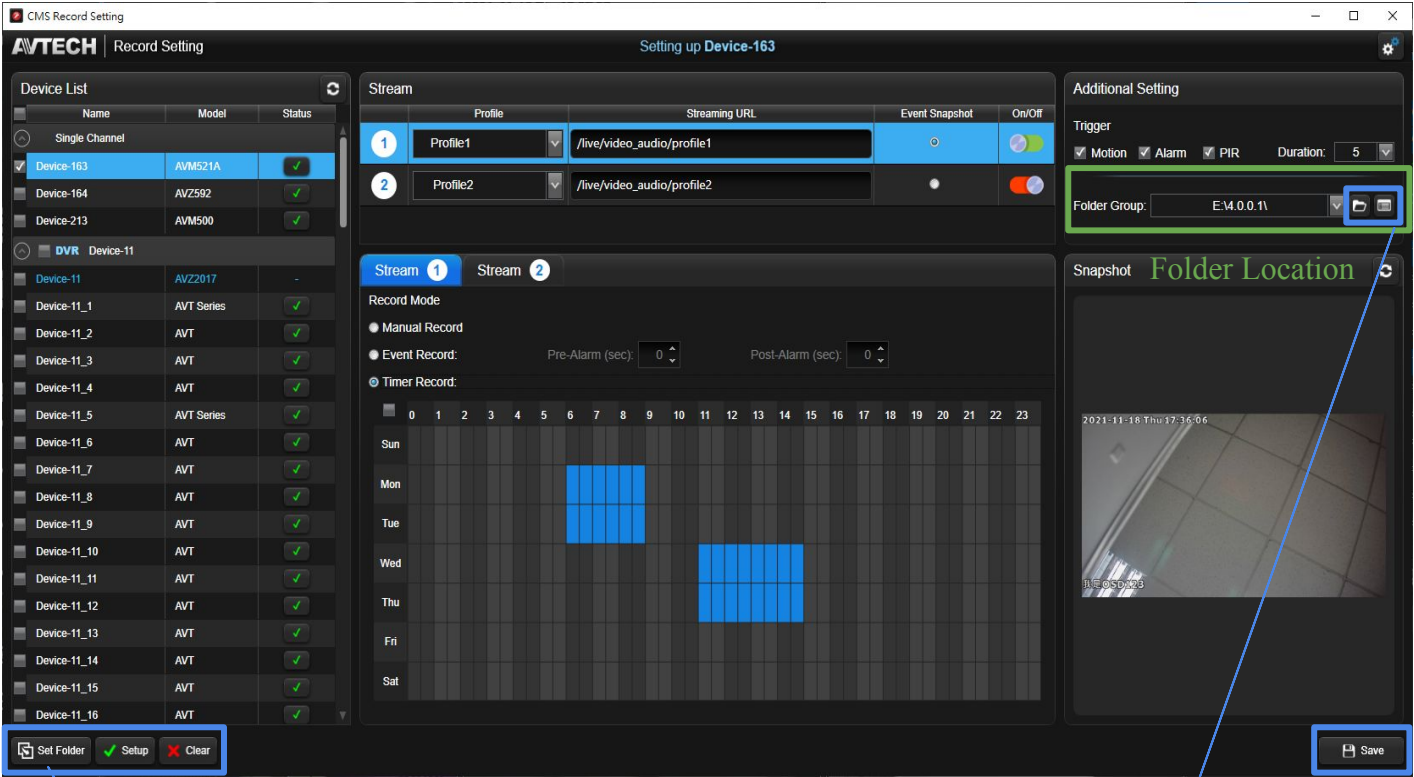








→ Record Stream and Mode

1. Manual Record: Preset mode to all the devices, all day recording.
2. Event Record: Automatically start recording when event detects. Custom the pre-alarm and post-alarm time.
3. Timer Record: Reserve to start recording can assign to the selected time. Mark it on the timetable.

Record
Folder Location

Record data can be saved not only to the appointed folder that setup at the local disk but also save to the separate folder to manage.

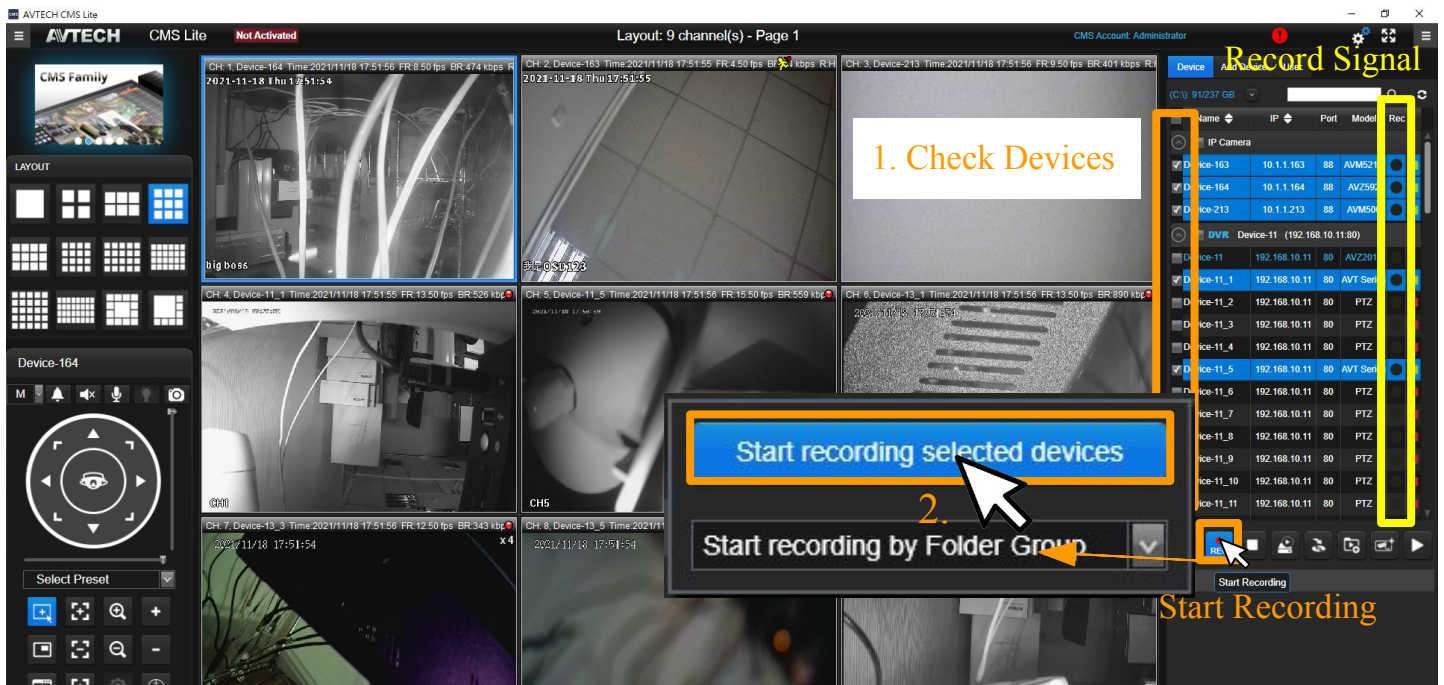


Function	Icon	Description
Choose Folder		Choose the folder location
Folder Group List		Inspect the saving location
Set Folder		Setup selected device to the folder
Setup		Open record setting
Clear		Erase record setting
Save		Save the setting



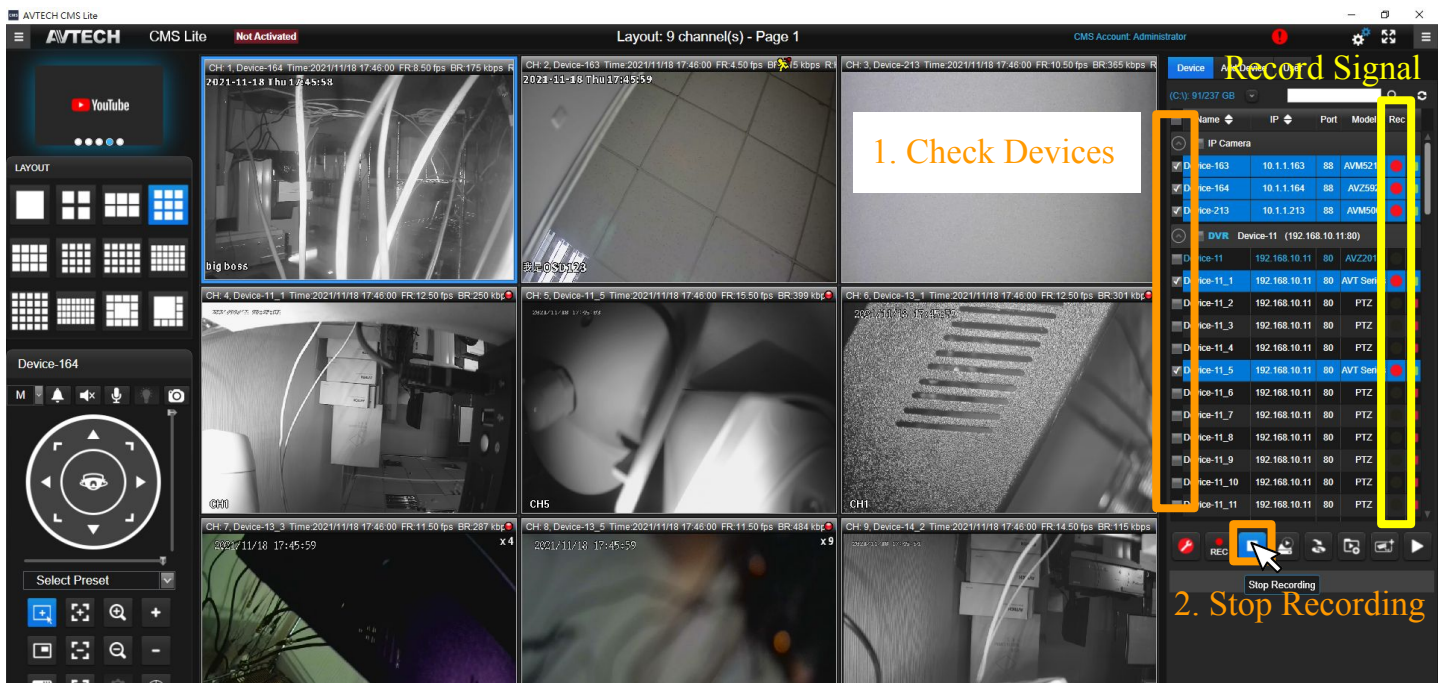
Start recording.

Check the needed devices → Click "Start Recording" then click "Start recording selected devices" → Wait for the red record signals appear



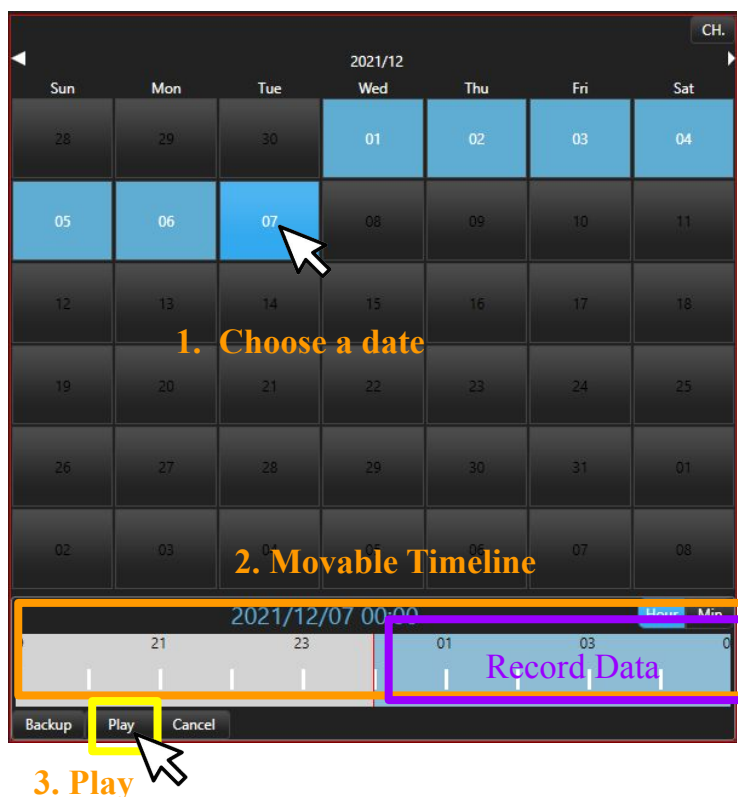
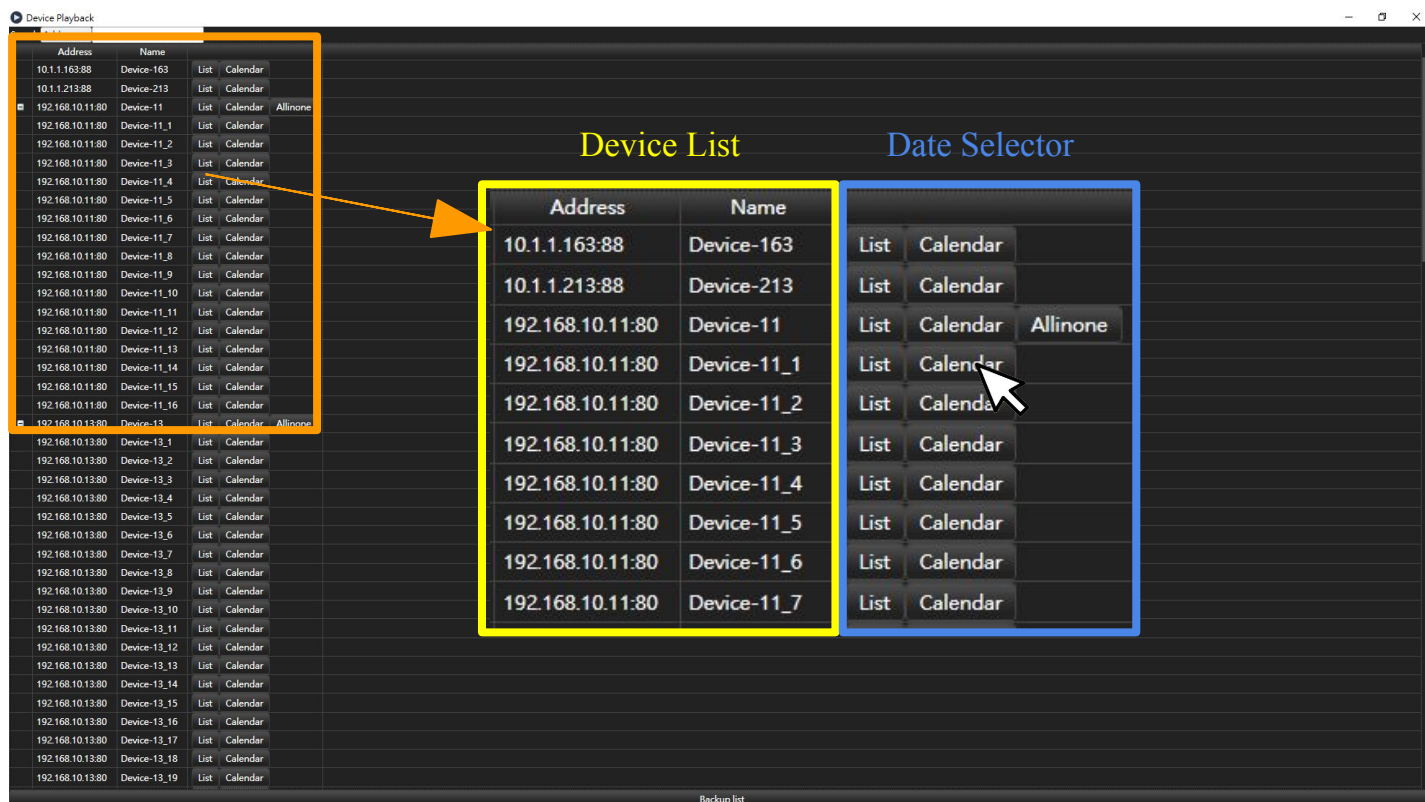
Stop recording.

Check the needed devices → Click "Stop Recording" → Wait for the red record signals disappear



Playback the record date from the device.

"Advanced Function" from the main control panel → Click "Device Playback" → Choose a type of date selector (List, Calendar or Allinone) on the needed device

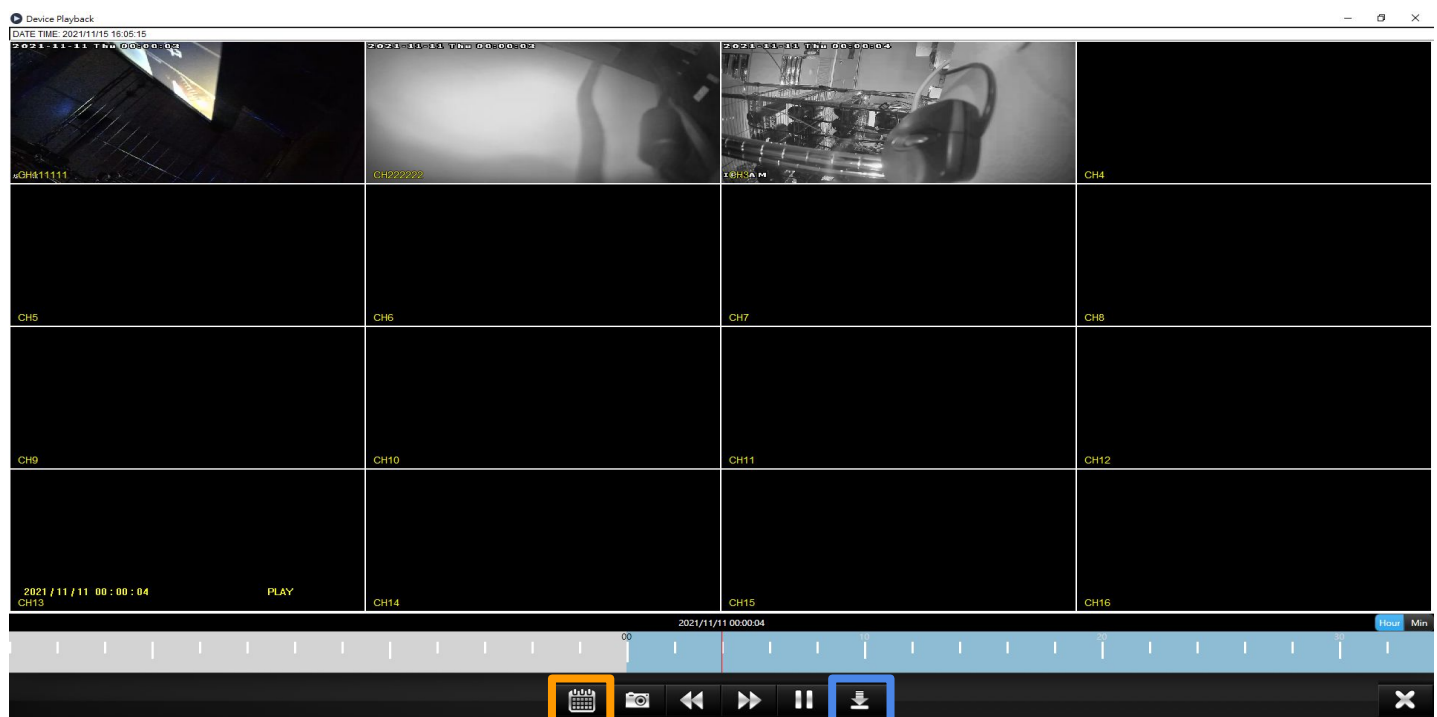
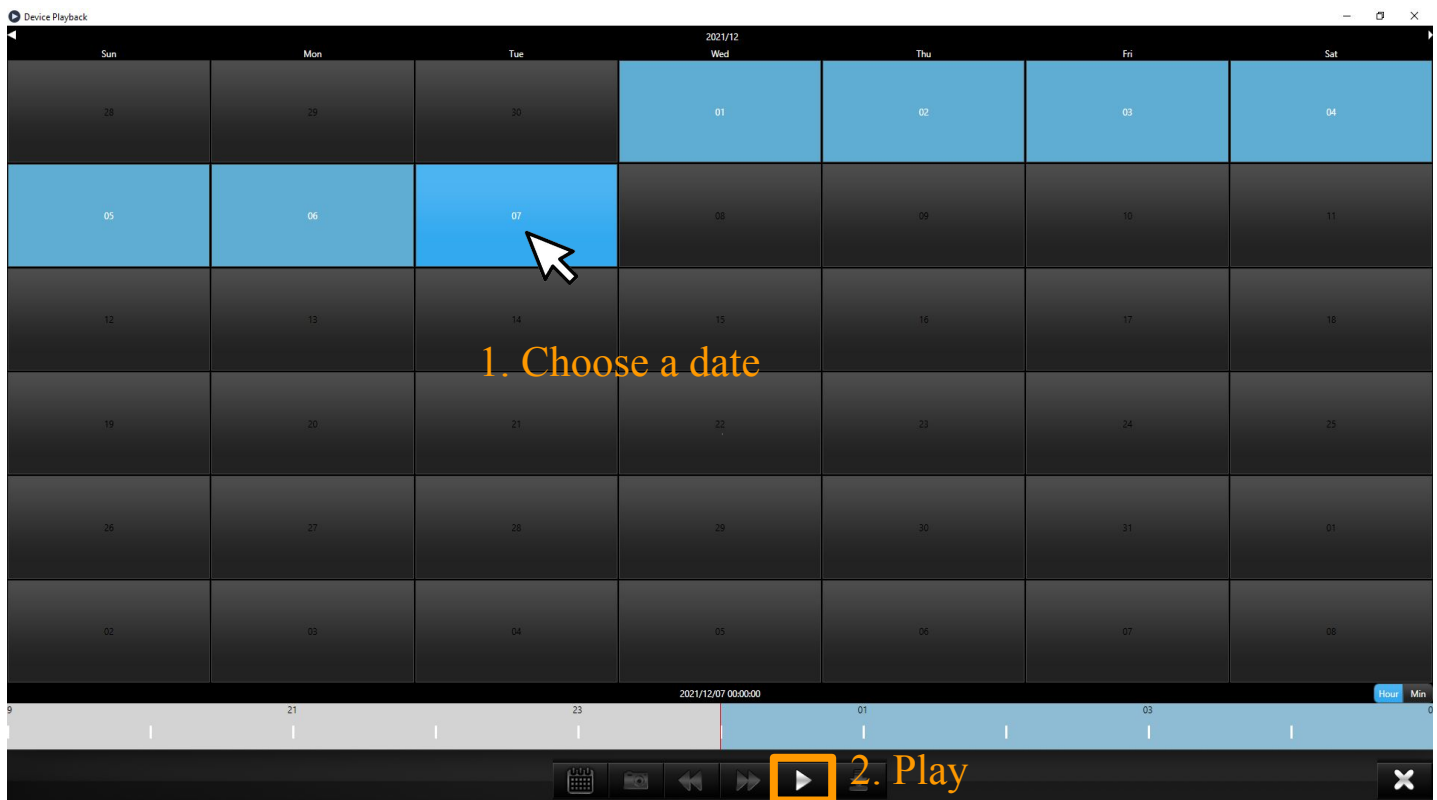


→ Calendar

Choose a date to playback → Click "Play" to open playback window

→ Allinone

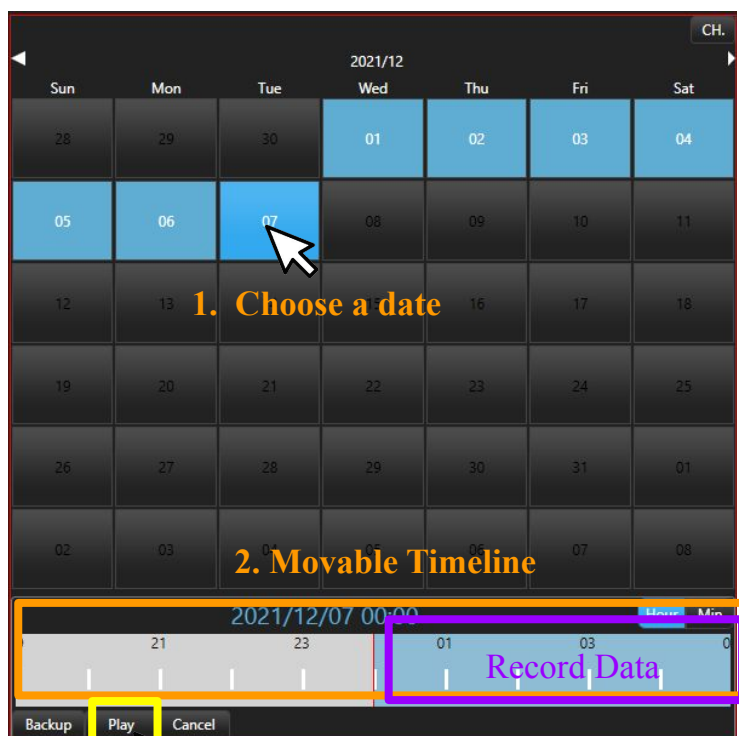
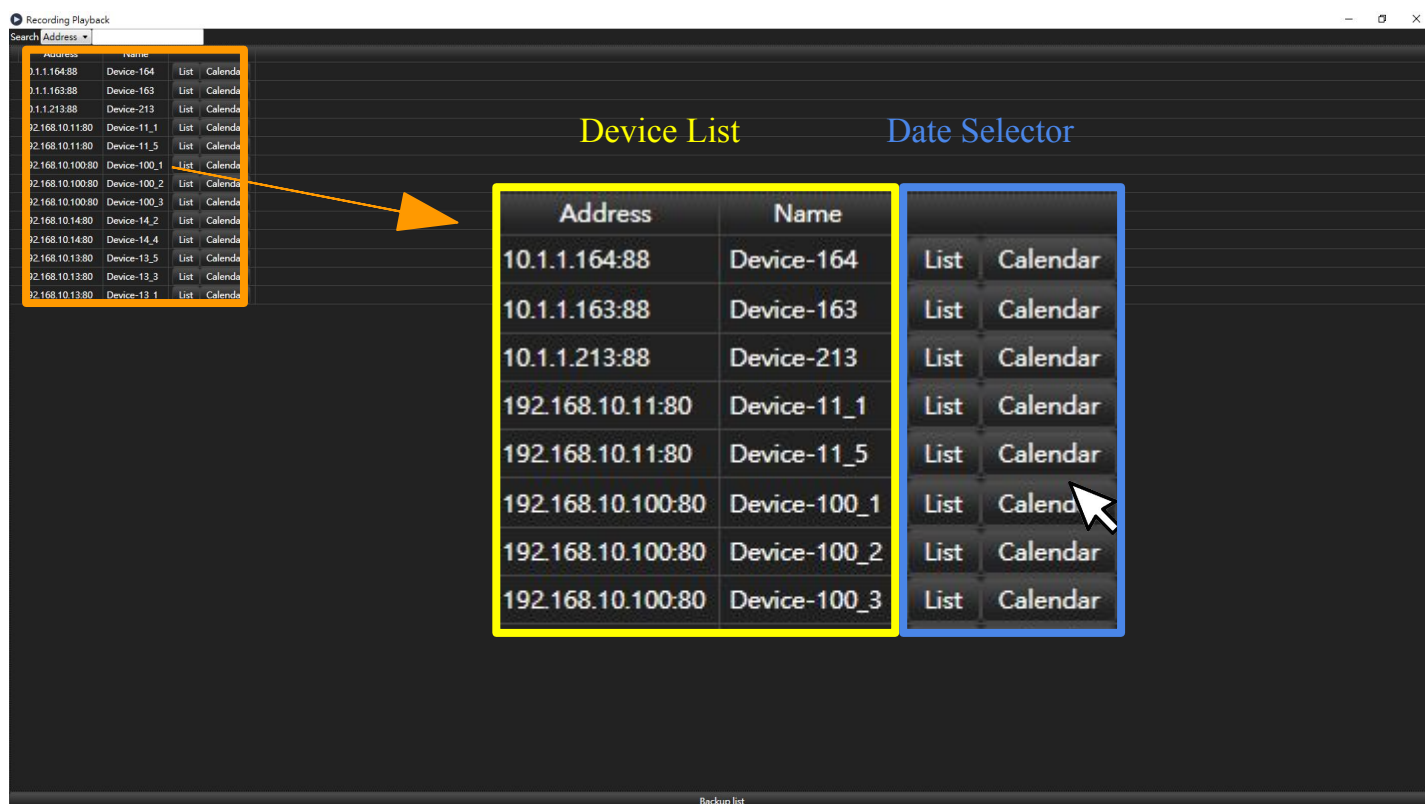
Choose a date → Click "Play" to open the whole channels window of NVR or DVR



Playback record data.

"Advanced Function" from the main control panel → Click "Recording Playback"

→ Choose a type of date selector (List or Calendar) on the needed device



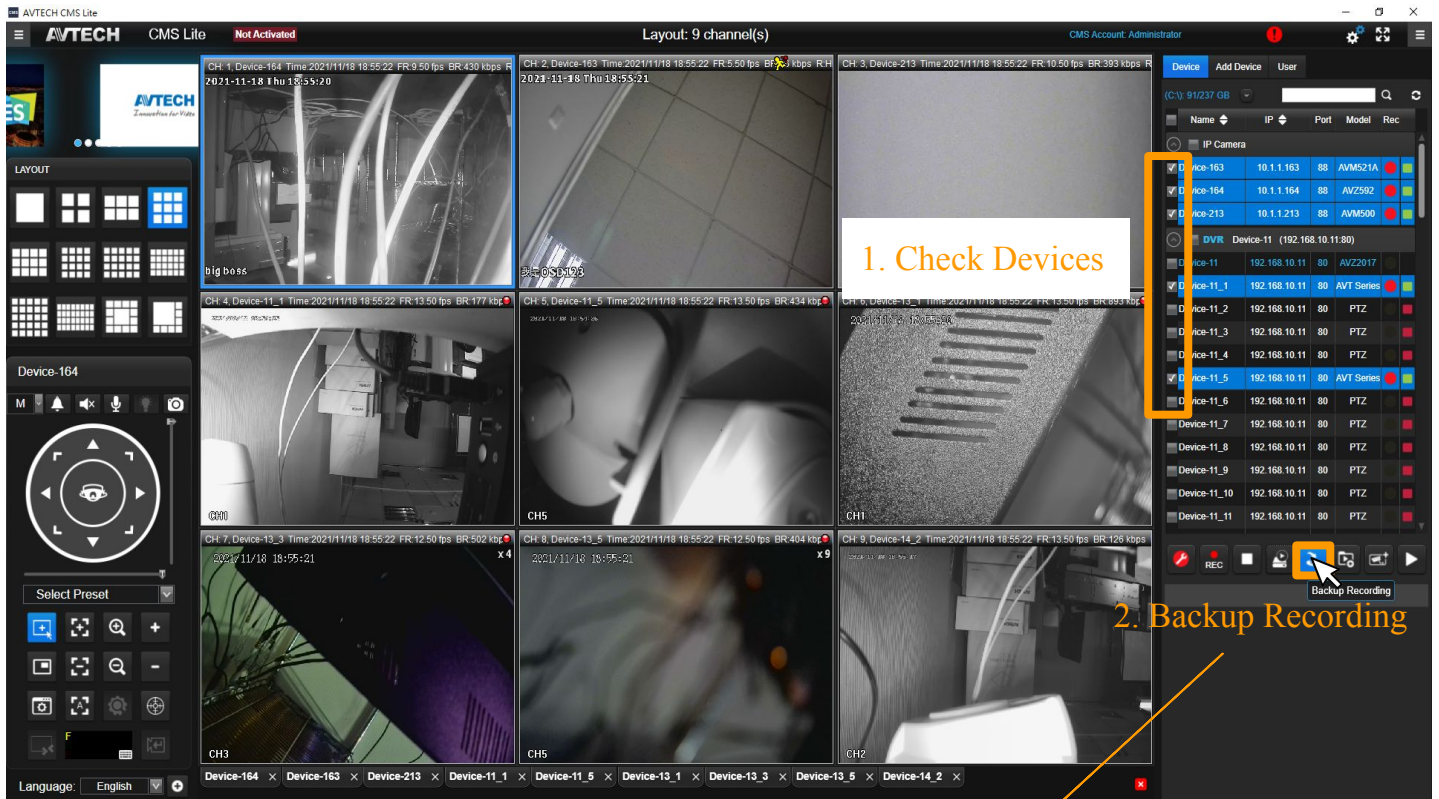
→ Calendar

Choose a date to playback → Click "Play" to open playback window

3. Play

Record Backup

Check the needed device that has activated record → Click "Backup Recording" from the main control panel Advanced Function → Adjust backup time → Choose a folder to save the record data



Begin Time 2021/11/18 18:55:34

2021年11月18日 18 : 55 : 34

End Time 2021/11/18 18:55:34

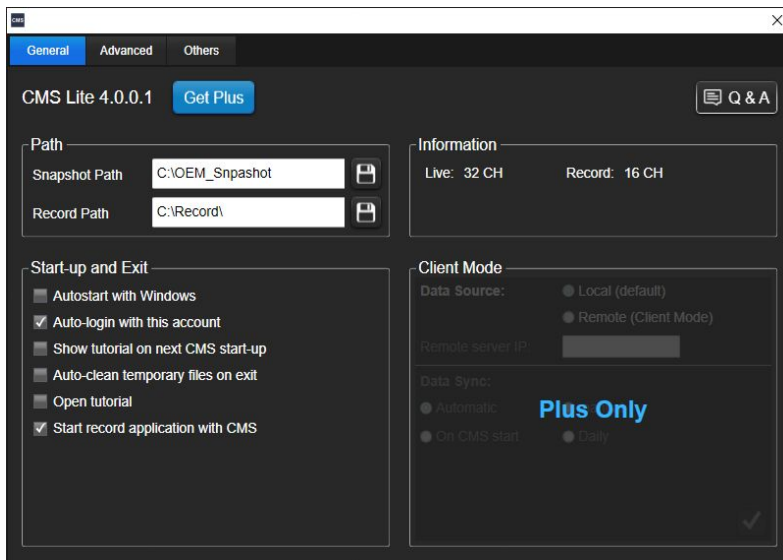
2021年11月18日 18 : 55 : 34

Directory Choose a folder

☒ ☐

System Configuration

Main and Additional

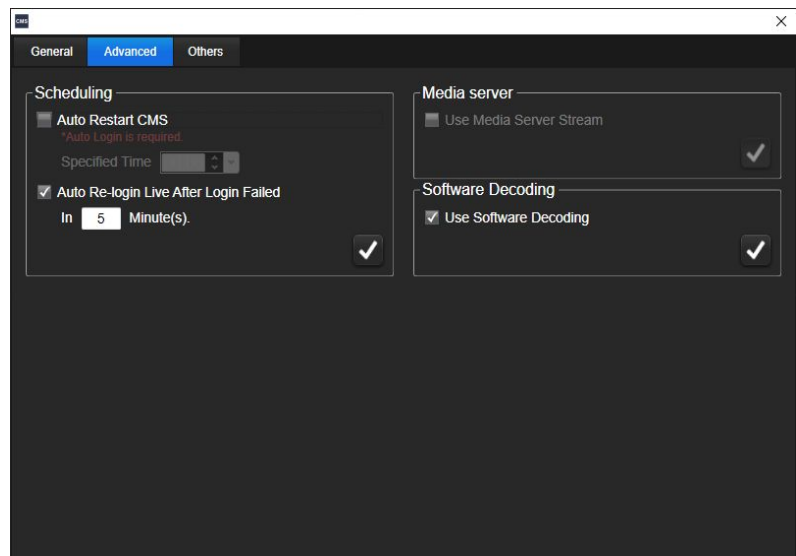


→ General Settings

1. File saving path
(Snapshot / Video Backup)
2. System Startup and Shut down
3. System related information

→ Additional Settings

1. CMS auto-restart
2. Streaming settings



→ Other Settings

1. Preset saving path
2. Backup frequency

