

# IP Scan Tool

## 1. User Interface Introduction

IP Scan Tool will automatically scan all devices in Local LAN at the first time and show information (IP/port/Mac/Type) of the devices. Function items are listed at right column

[illegible]

Note: Win7 doesn't support two Ethernet device work at the same time, please enable one of the Ethernet card function and set the other one connected to LAN to make sure it can access to cameras.

## 2. Scan Devices

**Search**

IP	Port	Mac	Type
192.168.1.227	89	00:0e:53:27:be:c6	IP CAMERA (DOME)
192.168.1.197	197	00:0e:53:23:af:c4	IP CAMERA (FIX)
192.168.1.224	88	00:0e:53:24:95:a2	IP CAMERA (FIX)
192.168.1.196	196	00:0e:53:22:fb:9e	IP CAMERA (FIX)
192.168.1.221	88	00:0e:53:25:94:ec	PCAM WIFI (FIXED)
192.168.1.195	195	00:0e:53:23:ca:1e	IP CAMERA (FIX)
192.168.1.163	163	00:0e:53:24:a8:53	IP CAMERA (FIX)

Buttons: Configure, Upgrade, **Scan**, Find, Reboot, Filter, Reset, Exit

Press Scan to search all local LAN devices

## 3. Change device configuration

**Search**

IP	Port	Mac	Type
192.168.1.197	197	00:0e:53:23:af:c4	IP CAMERA (FIX)
192.168.1.195	195	00:0e:53:23:ca:1e	IP CAMERA (FIX)
192.168.1.227	89	00:0e:53:27:be:c6	IP CAMERA (DOME)
192.168.1.224	88	00:0e:53:24:95:a2	IP CAMERA (FIX)
192.168.1.196	196	00:0e:53:22:fb:9e	IP CAMERA (FIX)
192.168.1.221	88	00:0e:53:25:94:ec	PCAM WIFI (FIXED)
192.168.1.163	163	00:0e:53:24:a8:53	IP CAMERA (FIX)

Buttons: **Configure**, Upgrade, Scan, Find, Reboot, Filter, Reset

1. Select one device that you would like to change its configuration setting

2. Press Configure

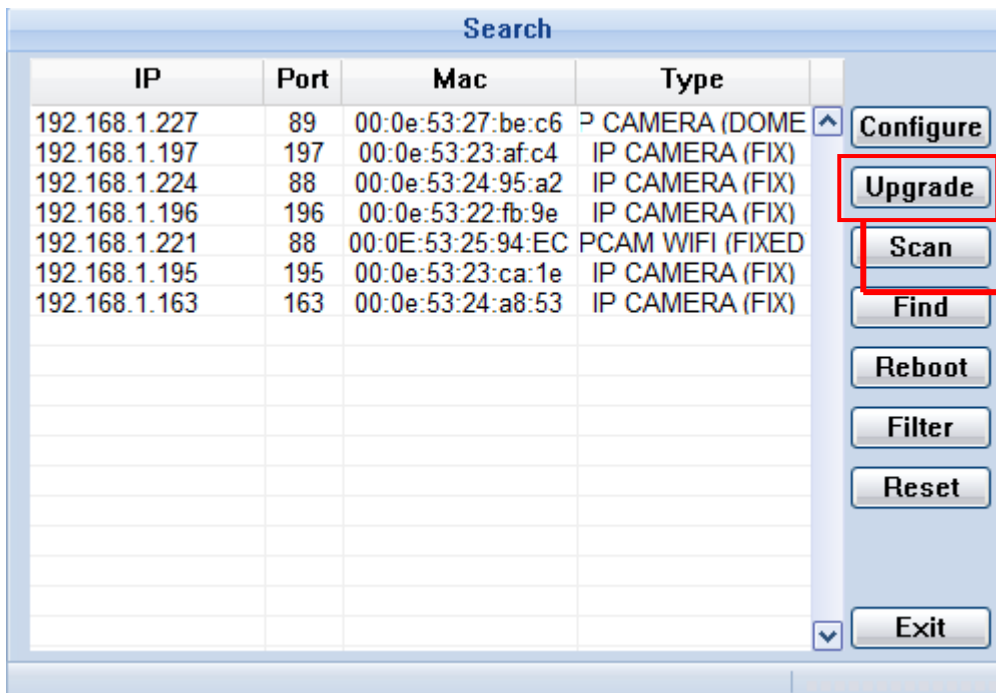
**Configuration Dialog:**

Server IP	192.168.1.197	DNS	8.8.8.8
MAC Address	00:0e:53:23:af:c4	Web Port	197
NetMask	255.0.0.0	User Name	admin
GateWay	192.168.1.254	Password	admin

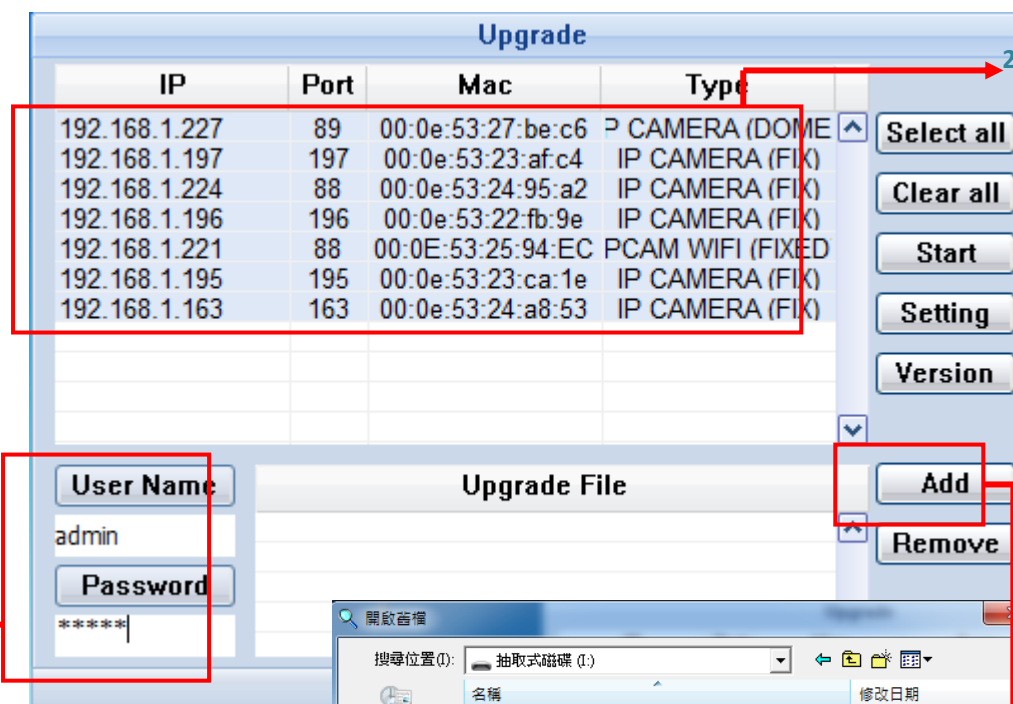
Buttons: OK

3. Change configuration as you like, and don't forget to enter user name / password. Finally, press "OK" to apply the settings.

#### 4. Upgrade Firmware to many devices at the same time



1. Press Upgrade



2. Select devices you want to upgrade

Note: please make sure the selected device share the same Firmware otherwise upgrade process will fail.

3. Enter user name and password

4. Add firmware that you want to upgrade.

Note: Please don't upgrade the firmware file from USB because it will cause failures sometimes. Please copy the file to your PC at first.

**Upgrade**

IP	Port	Mac	Type
192.168.1.197	197	00:0e:53:23:af:c4	IP CAMERA (FIX)
192.168.1.195	195	00:0e:53:23:ca:1e	IP CAMERA (FIX)
192.168.1.227	89	00:0e:53:27:be:c6	IP CAMERA (DOME)
192.168.1.224	88	00:0e:53:24:95:a2	IP CAMERA (FIX)
192.168.1.196	196	00:0e:53:22:fb:9e	IP CAMERA (FIX)
192.168.1.221	88	00:0e:53:25:94:EC	PCAM WIFI (FIXED)
192.168.1.163	163	00:0e:53:24:a8:53	IP CAMERA (FIX)

**User Name**  
admin

**Password**  
\*\*\*\*\*

**Upgrade File**  
I:\System.bin

Add

Remove

Cancel

Select all

Clear all

**Start**

Setting

Version

5. Press Start

It will automatically upgrade selected cameras, and it will show upgrade progress and status like 100% completed or failed at the end. If upgrade is failed, please do it again.

##### 5. Check firmware version

**Search**

IP	Port	Mac	Type
192.168.1.227	89	00:0e:53:27:be:c6	IP CAMERA (DOME)
192.168.1.197	197	00:0e:53:23:af:c4	IP CAMERA (FIX)
192.168.1.224	88	00:0e:53:24:95:a2	IP CAMERA (FIX)
192.168.1.196	196	00:0e:53:22:fb:9e	IP CAMERA (FIX)
192.168.1.221	88	00:0e:53:25:94:EC	PCAM WIFI (FIXED)
192.168.1.195	195	00:0e:53:23:ca:1e	IP CAMERA (FIX)
192.168.1.163	163	00:0e:53:24:a8:53	IP CAMERA (FIX)

Configure

**Upgrade**

Scan

Find

Reboot

Filter

Reset

Exit

1. Press Upgrade

**Upgrade**

IP	Port	Mac	Type
192.168.1.227	89	00:0e:53:27:be:c6	PCAMERA (DOME)
192.168.1.197	197	00:0e:53:23:af:c4	IP CAMERA (FIX)
192.168.1.224	88	00:0e:53:24:95:a2	IP CAMERA (FIX)
192.168.1.196	196	00:0e:53:22:fb:9e	IP CAMERA (FIX)
192.168.1.221	88	00:0E:53:25:94:EC	PCAM WIFI (FIXED)
192.168.1.195	195	00:0e:53:23:ca:1e	IP CAMERA (FIX)
192.168.1.163	163	00:0e:53:24:a8:53	IP CAMERA (FIX)

Buttons: Select all, Clear all, Start, Setting, Version, Add

**User Name**  
admin

**Password**  
\*\*\*\*\*

**Upgrade File**

**FW. Version**

IP	Version
192.168.1.227	1038-1021-1024-1012-A3
192.168.1.197	1044-1022-1026-1012
192.168.1.224	1044-1022-1026-1012
192.168.1.196	1038-1021-1024-1012-A3
192.168.1.221	
192.168.1.195	1038-1021-1024-1012
192.168.1.163	3F20-RU04-1001-1000

Total count : 7

2. Select devices you want to check.

3. Enter user name and password

4. Press Version

Notes: Device need to be upgraded once before checking its version. If the device shows upgrade failed and its version cannot be recognized (shown blank). Please Reset the device and upgrade it again.